

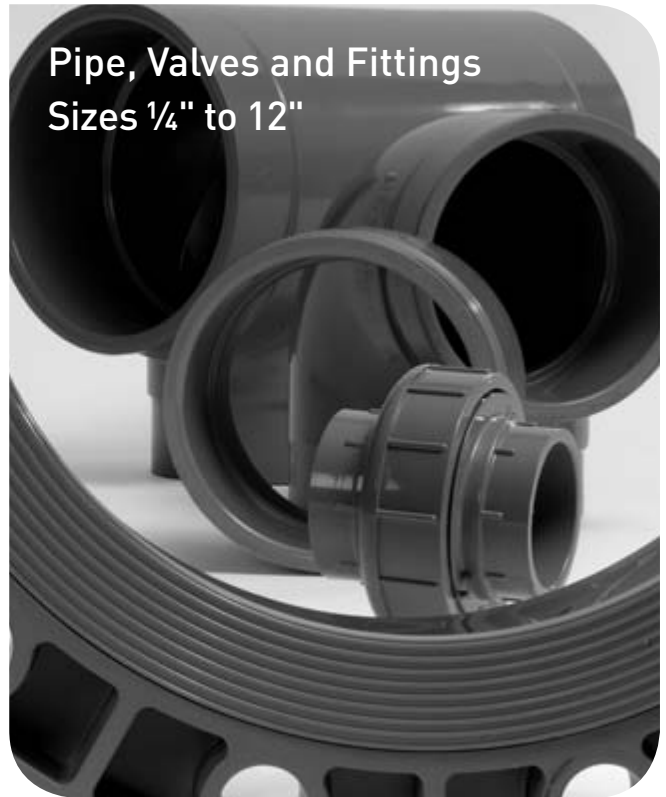
Section 2

Schedule 80 CPVC Piping System

Serviced by GF Little Rock

Effective March 27, 2006

Pipe, Valves and Fittings
Sizes 1/4" to 12"



Glossary

- Std. Pack** = Standard Carton Quantity
- FPT** = Female Pipe Thread
- MPT** = Male Pipe Thread
- S** = Tapered Socket
- SPG** = Spigot End (same dimension as pipe outside diameter)
- *** = Non-Returnable / Non-cancellable
- ^** = 40% Restocking Fee
- HS** = High Strength Design
- SL** = Streamline Design
- XXXX-XXXFB** = Assembled Fitting from Molded Components
- XXXX-XXXH** = Fabricated Fitting

| Product Line | Descriptions | Discount |
|---------------------|--|-----------------|
| 70 | CPVC Pressure Pipe-20ft. Lengths Plain End | _____ |
| 25 | CPVC Pressure Fittings - Molded | _____ |
| 34 | CPVC Pressure Expansion Joint | _____ |
| 33 | CPVC Pressure Brass Insert Fittings | _____ |
| 02 | CPVC Pressure LD Fittings - Molded | _____ |
| 06 | CPVC Pressure LD Fittings - Fabricated | _____ |
| 38 | CPVC Type 546 True Union Ball Valve | _____ |
| 15 | CPVC Type 375 True Union Ball Valve | _____ |
| 74 | CPVC Type 567 Butterfly Valve | _____ |

The technical information given in this publication implies no warranty of any kind and is subject to change without notice. Please consult our Terms and Conditions of Sale.

Not for Use with Compressed Air or Gases

DO NOT TEST with Air or Air over Water

GF Piping DOES NOT RECOMMEND the use of thermoplastic piping products for systems to transport or store compressed air or gases, or the testing of thermoplastic piping systems with compressed air or gases in above or below ground locations. The use of GF Piping products in compressed air or gas systems automatically voids the warranty for such products, and their use against our recommendation is entirely the responsibility and liability of the installer. GF Piping will not accept responsibility for damage or impairment from its products, or other consequential or incidental damages caused by misapplication, incorrect assembly, and/or exposure to harmful substances or conditions.

For more information about any of our product lines, please call (800) 423-2686.

Table of Contents

Schedule 80 CPVC Piping System

| | |
|--|-----|
| Specifications, Standards and Tolerances | 2.4 |
|--|-----|

| | |
|-----------------|-----|
| Pipe (1/2"-12") | 2.5 |
|-----------------|-----|

Fittings (1/4"-8")

| | |
|-----------------|------|
| Molded | 2.6 |
| Expansion Joint | 2.18 |
| Brass Insert | 2.19 |

Large Diameter Fittings (10"-12")

| | |
|------------------------------------|------|
| Pressure Large Diameter Molded | 2.20 |
| Pressure Large Diameter Fabricated | 2.21 |

Manual Valves

| | |
|-----------------------------------|------|
| Type 546 and Type 375 ball valves | 2.25 |
| Type 567 butterfly valve | 2.26 |

| | |
|------------------------------------|------|
| Specification Submittal Data Sheet | 2.28 |
|------------------------------------|------|

Specifications, Standards and Tolerances

Specifications and Standards

NSF/ANSI Standard 14

NSF/ANSI Standard 61

ASTM D 1784 : Material CPVC Type IV, Grade I Gray (cell classification 23447-B)

ASTM F 441 : CPVC Schedule 80 Pipe

ASTM F 439 : CPVC Schedule 80 Socket & Threaded Fittings

ASTM F 437 : CPVC Schedule 80 Threaded Fittings

ASTM F 1970 : CPVC Schedule 80 Unions & Flanges

ANSI B16.5 : Flange Bolt Hole Patterns

ANSI B1.20.1 : CPVC Schedule 80 NPT Threads

CSA B137.6 : CPVC Schedule 80 Pipe (1¼" - 2½" only)

Molded Dimension Tolerances

A Piston Position; Expansion Joints : ± 0.03

D Outside Diameter : ± 0.06

G, G1 Intersections of centerlines to bottom of socket; 90° Ells, Tees : up to 4" ± 0.03 ; 6" and above ± 0.06

GJ, GN Intersections of centerlines to bottom of socket; 45° Wyes : up to 4" ± 0.03 ; 6" and above ± 0.06

H, HJ, HN Intersections of centerlines to face of fitting; 90° Ells, 45° Ells, Tees, 45° Wyes : up to 4" ± 0.03 ; 6" and above ± 0.06

HL Socket Bottom to Face of Fitting : up to 4" ± 0.03 ; 6" and above ± 0.06

J Intersections of centerlines to bottom of socket; 45° & 30° Ells : up to 4" ± 0.03 ; 6" and above ± 0.06

L Overall Length of fitting : ± 0.06

N Socket Bottom to Socket Bottom; Couplings, Unions : ± 0.06

N1 Socket Bottom to Face of Flange : ± 0.06

R Thickness on Plugs, Flanges : ± 0.03

T, T1 Effective Thread Length : Reference Only

W Height of Cap : ± 0.06

Fabricated Dimension Tolerances

D Outside Diameter : ± 0.50

E Drive Pin Diameter : ± 0.50

G, G1 Intersections of centerlines to bottom of socket; 90° Ells, Tees, Crosses : ± 0.25

GJ, GN Intersections of centerlines to bottom of socket; 45° Wyes : ± 0.25

H, HJ, HN Intersections of centerlines to face of fitting; 90° Ells, 45° Ells, Tees, 45° Wyes, True Wyes : ± 0.50

HL Socket Bottom to Face of Fitting : ± 0.25

J Intersections of centerlines to bottom of socket; 11¼°, 15°, 30°, 22½°, 45° Ells, True Wyes : ± 0.25

L Overall Length of fitting : ± 0.50

N Socket Bottom to Socket Bottom; Couplings : ± 0.50

N1 Socket Bottom to Face of Flange : ± 0.50

R Thickness on Plugs, Flanges : ± 0.25

T, T1 Effective Thread Length : Reference Only

W Height of Cap : ± 0.25

Schedule 80 CPVC Pressure Pipe

P/L 70 : CPVC Pressure Pipe - 20 ft. lengths Plain End

| Size | Part Number Plain End | List \$/100 ft. | Lift Qty (ft.) | Average O.D. | Min. Wall | psi at 73° F |
|-------|-----------------------|-----------------|----------------|--------------|-----------|--------------|
| 1/2 | *C8008-005AB | See Note | 5600 ft. | 0.840 | 0.147 | 848 |
| 3/4 | *C8008-007AB | " | 5000 ft. | 1.050 | 0.154 | 688 |
| 1 | *C8008-010AB | " | 2360 ft | 1.315 | 0.179 | 630 |
| 1 1/4 | *C8008-012AB | " | 1960 ft | 1.660 | 0.191 | 520 |
| 1 1/2 | *C8008-015AB | " | 1800 ft | 1.900 | 0.200 | 471 |
| 2 | *C8008-020AB | " | 1060 ft | 2.375 | 0.218 | 404 |
| 2 1/2 | *C8008-025AB | " | 880 ft | 2.875 | 0.276 | 425 |
| 3 | *C8008-030AB | " | 700 ft | 3.500 | 0.300 | 375 |
| 4 | *C8008-040AB | " | 520 ft | 4.500 | 0.337 | 324 |
| 6 | *C8008-060AB | " | 220 ft | 6.625 | 0.432 | 279 |
| 8 | *C8008-080AB | " | 100 ft | 8.625 | 0.500 | 246 |
| 10 | *C8008-100AB | " | 80 ft | 10.750 | 0.593 | 230 |
| 12 | *C8008-120AB | " | 60 ft | 12.750 | 0.687 | 230 |

Note: For current pricing information please see separate price sheet or visit our website at www.gfpiping.com

Schedule 80 CPVC

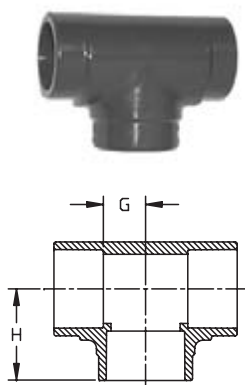
^ = 40% Restock Charge

* = Non-Cancelable / Non-Returnable

Dimensions are subject to change. Please see online "Price Lists" at <http://www.gfpiping.com> for up-to-date information.

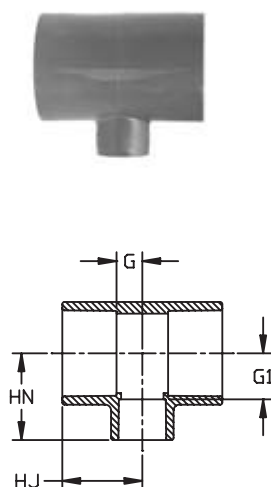
Schedule 80 CPVC Pressure Fittings

P/L 25 : CPVC Pressure Fittings - Molded



Tee (S x S x S)

| Size | Part Number | \$ List/ea. | Std Pack | H | G | Design |
|-------|-------------|---------------|----------|------|------|--------|
| 1/2 | 9801-005 | 10.46 | 25 | 1.49 | 0.50 | SL |
| 3/4 | 9801-007 | 10.66 | 15 | 1.61 | 0.56 | SL |
| 1 | 9801-010 | 13.06 | 20 | 1.86 | 0.72 | SL |
| 1 1/4 | 9801-012 | 27.53 | 5 | 2.19 | 0.91 | SL |
| 1 1/2 | 9801-015 | 31.57 | 5 | 2.44 | 1.06 | SL |
| 2 | 9801-020 | 35.13 | 5 | 2.78 | 1.29 | SL |
| 2 1/2 | 9801-025 | 89.42 | 5 | 3.33 | 1.50 | HS |
| 3 | 9801-030 | 89.42 | 5 | 3.75 | 1.85 | HS |
| 4 | 9801-040 | 119.02 | 5 | 4.63 | 2.38 | HS |
| 6 | 9801-060 | 309.68 | 2 | 6.63 | 3.55 | HS |
| 8 | 9801-080 | 887.10 | 1 | 8.63 | 4.59 | HS |



Reducing Tee (S x S x S)

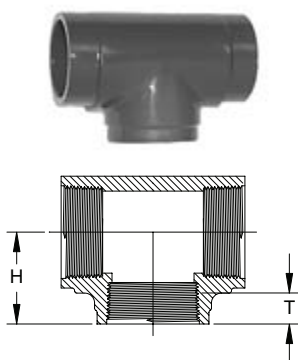
| Size | Part Number | \$ List/ea. | Std Pack | HJ | HN | G | G1 | Design |
|-----------|-------------|---------------|----------|------|------|------|------|--------|
| 3/4x1/2 | 9801-101 | 23.88 | 25 | 1.63 | 1.63 | 0.61 | 0.73 | SL |
| 1x1/2 | 9801-130 | 27.50 | 25 | 1.88 | 1.63 | 0.73 | 0.75 | SL |
| 1x3/4 | 9801-131 | 27.50 | 20 | 1.88 | 1.87 | 0.73 | 0.86 | SL |
| 1 1/4x1 | 9801-168 | 53.83 | 20 | 2.00 | 2.00 | 0.73 | 0.91 | SL |
| 1 1/2x1/2 | 9801-209 | 56.22 | 5 | 1.91 | 1.93 | 0.54 | 1.05 | SL |
| 1 1/2x3/4 | 9801-210 | 56.22 | 5 | 2.00 | 2.00 | 0.61 | 1.05 | SL |
| 1 1/2x1 | 9801-211 | 56.22 | 5 | 2.13 | 2.20 | 0.73 | 0.81 | SL |
| 2x1/2 | 9801-247 | 64.98 | 5 | 2.04 | 2.19 | 0.53 | 1.30 | SL |
| 2x3/4 | 9801-248 | 64.98 | 5 | 2.13 | 2.31 | 0.73 | 1.29 | SL |
| 2x1 | 9801-249 | 66.98 | 5 | 2.25 | 2.44 | 0.73 | 1.26 | SL |
| 2x1 1/2 | 9801-251 | 66.98 | 5 | 2.56 | 2.69 | 1.05 | 1.29 | SL |
| 2 1/2x2 | 9801-292 | 78.00 | 5 | 3.04 | 3.03 | 1.28 | 1.53 | SL |
| 3x2 | 9801-338 | 136.66 | 5 | 3.21 | 3.40 | 1.31 | 1.87 | SL |
| 4x2 | 9801-420 | 164.09 | 5 | 3.52 | 3.88 | 1.26 | 2.37 | SL |
| 4x3 | 9801-422 | 172.72 | 5 | 4.15 | 4.31 | 1.87 | 2.39 | SL |
| 6x2 | *9801-528FB | 551.96 | 1 | 6.58 | 7.21 | 3.56 | 5.65 | HS |
| 6x3 | *9801-530FB | 551.96 | 2 | 6.58 | 7.21 | 3.56 | 5.26 | HS |
| 6x4 | 9801-532 | 477.52 | 2 | 6.58 | 6.81 | 3.49 | 4.50 | HS |
| 8x6 | 9801-585 | 876.61 | 1 | 7.63 | 7.59 | 3.59 | 4.50 | HS |

HS = High Strength Design
SL = Slim Line Design

^ = 40% Restock Charge

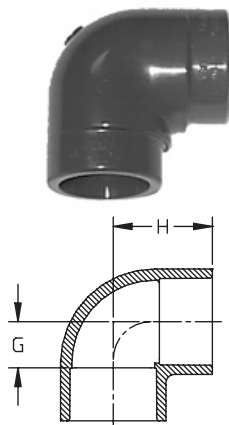
* = Non-Cancelable / Non-Returnable

Dimensions are subject to change. Please see online "Price Lists" at <http://www.gfpiping.com> for up-to-date information.



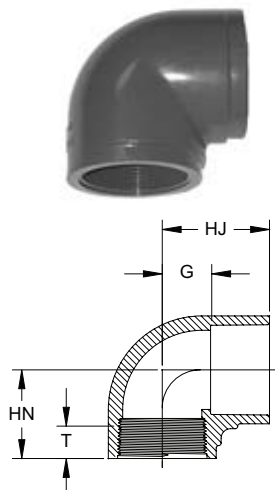
Tee (FPT x FPT x FPT)

| Size | Part Number | List \$/ea. | Std. Pack | H | T | Design |
|-------|-------------|-------------|-----------|------|------|--------|
| 1/4 | ^9805-002 | 23.27 | 50 | 0.92 | 0.40 | HS |
| 3/8 | ^9805-003 | 23.27 | 50 | 1.16 | 0.41 | HS |
| 1/2 | ^9805-005 | 23.27 | 25 | 1.27 | 0.53 | HS |
| 3/4 | ^9805-007 | 33.52 | 15 | 1.38 | 0.55 | HS |
| 1 | ^9805-010 | 36.07 | 15 | 1.70 | 0.68 | HS |
| 1 1/4 | ^9805-012 | 36.30 | 10 | 1.93 | 0.71 | HS |
| 1 1/2 | ^9805-015 | 38.13 | 10 | 2.08 | 0.72 | HS |
| 2 | ^9805-020 | 42.32 | 5 | 2.35 | 0.76 | HS |
| 2 1/2 | ^9805-025 | 201.11 | 5 | 2.88 | 1.14 | HS |
| 3 | ^9805-030 | 210.98 | 5 | 3.50 | 1.20 | HS |
| 4 | ^9805-040 | 499.82 | 5 | 4.06 | 1.30 | HS |



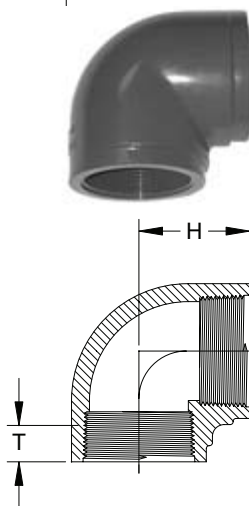
90° Ell (S x S)

| Size | Part Number | List \$/ea. | Std. Pack | H | G | Design |
|-------|-------------|-------------|-----------|------|------|--------|
| 1/4 | 9806-002 | 11.38 | 50 | 0.95 | 0.33 | HS |
| 3/8 | 9806-003 | 11.38 | 50 | 1.17 | 0.41 | HS |
| 1/2 | 9806-005 | 4.46 | 25 | 1.41 | 0.50 | SL |
| 3/4 | 9806-007 | 5.70 | 25 | 1.61 | 0.56 | SL |
| 1 | 9806-010 | 9.04 | 10 | 1.86 | 0.69 | SL |
| 1 1/4 | 9806-012 | 19.58 | 10 | 2.17 | 0.91 | SL |
| 1 1/2 | 9806-015 | 21.84 | 10 | 2.41 | 1.03 | SL |
| 2 | 9806-020 | 26.41 | 5 | 2.78 | 1.28 | SL |
| 2 1/2 | 9806-025 | 60.73 | 5 | 3.29 | 1.51 | SL |
| 3 | 9806-030 | 68.77 | 5 | 3.75 | 1.85 | HS |
| 4 | 9806-040 | 123.83 | 5 | 4.59 | 2.34 | HS |
| 6 | 9806-060 | 248.84 | 1 | 6.70 | 3.51 | SL |
| 8 | 9806-080 | 608.93 | 1 | 8.52 | 4.47 | HS |



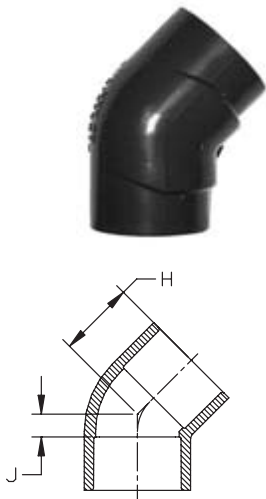
90° Ell (S x FPT)

| Size | Part Number | List \$/ea. | Std. Pack | HJ | HN | G | T | Design |
|------|-------------|-------------|-----------|------|------|------|------|--------|
| 1/2 | 9807-005 | 11.81 | 25 | 1.38 | 1.28 | 0.50 | 0.53 | HS |
| 3/4 | 9807-007 | 13.86 | 25 | 1.57 | 1.38 | 0.56 | 0.55 | HS |
| 1 | 9807-010 | 18.16 | 10 | 1.82 | 1.70 | 0.69 | 0.68 | HS |



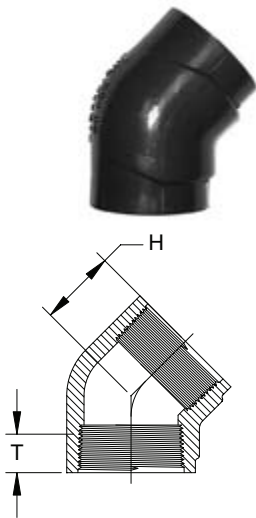
90° Ell (FPT x FPT)

| Size | Part Number | List \$/ea. | Std. Pack | H | T | Design |
|-------|-------------|-------------|-----------|------|------|--------|
| 1/4 | ^9808-002 | 11.97 | 50 | 0.92 | 0.40 | HS |
| 3/8 | ^9808-003 | 11.97 | 50 | 1.00 | 0.41 | HS |
| 1/2 | ^9808-005 | 6.94 | 25 | 1.29 | 0.53 | HS |
| 3/4 | ^9808-007 | 10.40 | 20 | 1.38 | 0.55 | HS |
| 1 | ^9808-010 | 14.61 | 10 | 1.70 | 0.68 | HS |
| 1 1/4 | ^9808-012 | 28.09 | 10 | 1.93 | 0.71 | HS |
| 1 1/2 | ^9808-015 | 30.26 | 10 | 2.06 | 0.72 | HS |
| 2 | ^9808-020 | 40.54 | 5 | 2.36 | 0.76 | HS |
| 2 1/2 | ^9808-025 | 130.90 | 5 | 3.00 | 1.14 | HS |
| 3 | ^9808-030 | 117.81 | 5 | 3.50 | 1.20 | HS |
| 4 | ^9808-040 | 215.62 | 5 | 4.13 | 1.30 | HS |



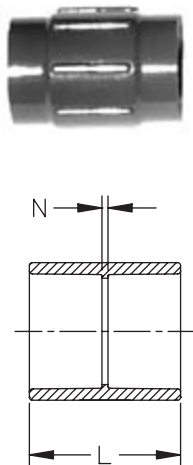
45° Ell (S x S)

| Size | Part Number | List \$/ea. | Std. Pack | H | J | Design |
|-------|-------------|-------------|-----------|------|------|--------|
| 1/4 | 9817-002 | 16.09 | 50 | 0.81 | 0.13 | HS |
| 3/8 | 9817-003 | 16.09 | 50 | 0.94 | 0.19 | HS |
| 1/2 | 9817-005 | 5.46 | 25 | 1.21 | 0.25 | SL |
| 3/4 | 9817-007 | 7.91 | 20 | 1.32 | 0.33 | SL |
| 1 | 9817-010 | 12.54 | 25 | 1.47 | 0.29 | SL |
| 1 1/4 | 9817-012 | 24.64 | 15 | 1.70 | 0.40 | SL |
| 1 1/2 | 9817-015 | 25.30 | 25 | 1.88 | 0.44 | SL |
| 2 | 9817-020 | 28.38 | 5 | 2.16 | 0.60 | SL |
| 2 1/2 | 9817-025 | 58.00 | 5 | 2.48 | 0.65 | HS |
| 3 | 9817-030 | 74.53 | 5 | 2.66 | 0.78 | SL |
| 4 | 9817-040 | 102.31 | 5 | 3.24 | 0.95 | SL |
| 6 | 9817-060 | 315.20 | 1 | 4.83 | 1.73 | HS |
| 8 | 9817-080 | 655.81 | 1 | 6.08 | 1.98 | HS |



45° Ell (FPT x FPT)

| Size | Part Number | List \$/ea. | Std. Pack | H | T | Design |
|-------|-------------|-------------|-----------|------|------|--------|
| 1/4 | ^9819-002 | 15.91 | 50 | 0.76 | 0.40 | HS |
| 3/8 | ^9819-003 | 15.91 | 50 | 0.94 | 0.41 | HS |
| 1/2 | ^9819-005 | 15.11 | 25 | 1.02 | 0.53 | HS |
| 3/4 | ^9819-007 | 16.59 | 20 | 1.14 | 0.55 | HS |
| 1 | ^9819-010 | 18.24 | 25 | 1.33 | 0.68 | HS |
| 1 1/4 | ^9819-012 | 31.16 | 15 | 1.40 | 0.71 | HS |
| 1 1/2 | ^9819-015 | 31.16 | 10 | 1.52 | 0.72 | HS |
| 2 | ^9819-020 | 41.16 | 5 | 1.72 | 0.76 | HS |
| 3 | ^9819-030 | 114.73 | 5 | 2.44 | 1.20 | HS |
| 4 | ^9819-040 | 154.30 | 5 | 2.77 | 1.30 | HS |



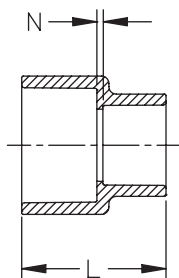
Coupling (S x S)

| Size | Part Number | List \$/ea. | Std. Pack | L | N | Design |
|-------|-------------|-------------|-----------|------|------|--------|
| 1/4 | 9829-002 | 12.12 | 50 | 1.39 | 0.14 | HS |
| 3/8 | 9829-003 | 12.12 | 50 | 1.64 | 0.14 | HS |
| 1/2 | 9829-005 | 4.71 | 25 | 1.93 | 0.13 | SL |
| 3/4 | 9829-007 | 6.60 | 20 | 2.18 | 0.13 | SL |
| 1 | 9829-010 | 8.88 | 25 | 2.41 | 0.13 | SL |
| 1 1/4 | 9829-012 | 13.30 | 25 | 2.64 | 0.12 | SL |
| 1 1/2 | 9829-015 | 16.76 | 10 | 2.90 | 0.13 | SL |
| 2 | 9829-020 | 19.47 | 5 | 3.14 | 0.12 | SL |
| 2 1/2 | 9829-025 | 43.31 | 5 | 3.75 | 0.16 | HS |
| 3 | 9829-030 | 47.09 | 5 | 4.04 | 0.25 | SL |
| 4 | 9829-040 | 61.71 | 5 | 4.79 | 0.25 | SL |
| 6 | 9829-060 | 145.28 | 2 | 6.41 | 0.34 | HS |
| 8 | 9829-080 | 392.86 | 2 | 8.40 | 0.34 | HS |

HS = High Strength Design
SL = Slim Line Design

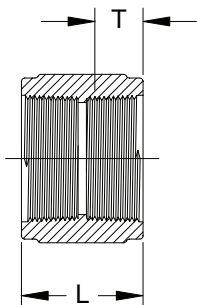
^ = 40% Restock Charge
* = Non-Cancelable / Non-Returnable

Dimensions are subject to change. Please see online "Price Lists" at <http://www.gfpiping.com> for up-to-date information.



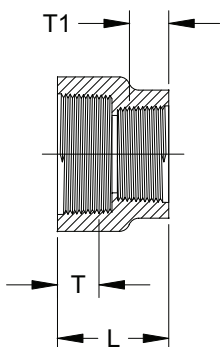
Reducing Coupling (S x S)

| Size | Part Number | List \$/ea. | Std. Pack | L | N | Design |
|---------------|-------------|-------------|-----------|-------|------|--------|
| 3/4 x 1/2 | 9829-101 | 12.37 | 25 | 2.16 | 0.14 | HS |
| 1 x 1/2 | 9829-130 | 17.60 | 25 | 2.12 | 0.09 | HS |
| 1 x 3/4 | 9829-131 | 17.60 | 25 | 2.26 | 0.12 | HS |
| 1 1/2 x 1/2 | *9829-209FB | 40.86 | 1 | 3.34 | 0.17 | HS |
| 1 1/2 x 3/4 | *9829-210FB | 40.86 | 1 | 3.34 | 0.17 | HS |
| 1 1/2 x 1 | 9829-211 | 40.00 | 15 | 2.66 | 0.10 | HS |
| 1 1/2 x 1 1/4 | 9829-212 | 40.00 | 20 | 2.82 | 0.10 | HS |
| 2 x 1/2 | *9829-247FB | 54.03 | 1 | 3.35 | 0.88 | HS |
| 2 x 3/4 | *9829-248FB | 54.03 | 1 | 3.36 | 0.77 | HS |
| 2 x 1 | 9829-249 | 54.03 | 5 | 3.12 | 0.33 | HS |
| 2 x 1 1/4 | *9829-250FB | 54.03 | 1 | 3.37 | 0.52 | HS |
| 2 x 1 1/2 | 9829-251 | 52.92 | 5 | 3.05 | 0.10 | HS |
| 2 1/2 x 1 1/2 | 9829-291 | 61.52 | 1 | 3.30 | 0.13 | HS |
| 3 x 2 | 9829-338 | 121.66 | 5 | 3.61 | 0.16 | HS |
| 4 x 2 | *9829-420FB | 148.28 | 1 | 4.94 | 1.12 | HS |
| 4 x 3 | 9829-422 | 145.14 | 5 | 4.39 | 0.26 | HS |
| 6 x 4 | 9829-532 | 326.77 | 2 | 10.25 | 3.50 | HS |
| 8 x 6 | 9829-585 | 571.36 | 2 | 9.12 | 2.07 | HS |



Coupling (FPT x FPT)

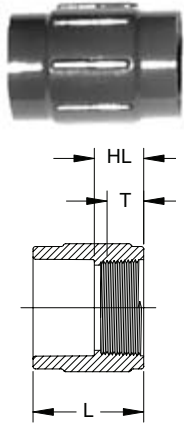
| Size | Part Number | List \$/ea. | Std. Pack | L | T | Design |
|-------|-------------|-------------|-----------|------|------|--------|
| 1/4 | ^9830-002 | 15.24 | 50 | 1.30 | 0.40 | HS |
| 3/8 | ^9830-003 | 15.24 | 50 | 1.34 | 0.41 | HS |
| 1/2 | ^9830-005 | 12.54 | 25 | 1.66 | 0.53 | HS |
| 3/4 | ^9830-007 | 20.28 | 25 | 1.73 | 0.55 | HS |
| 1 | ^9830-010 | 23.02 | 25 | 2.10 | 0.68 | HS |
| 1 1/4 | ^9830-012 | 24.17 | 25 | 2.19 | 0.71 | HS |
| 1 1/2 | ^9830-015 | 26.22 | 10 | 2.22 | 0.72 | HS |
| 2 | ^9830-020 | 30.91 | 5 | 2.29 | 0.76 | HS |
| 3 | ^9830-030 | 65.96 | 5 | 3.57 | 1.20 | HS |
| 4 | ^9830-040 | 134.46 | 5 | 3.73 | 1.30 | HS |



Reducing Coupling (FPTx FPT)

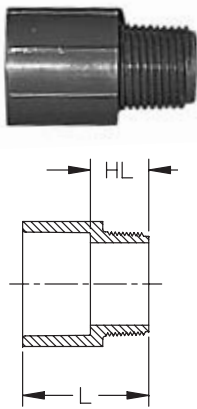
| Size | Part Number | List \$/ea. | Std. Pack | L | T | T1 | Design |
|-----------|-------------|-------------|-----------|------|------|------|--------|
| 1/2 x 1/4 | ^9830-072 | 21.39 | 50 | 1.45 | 0.53 | 0.40 | HS |
| 1/2 x 3/8 | ^9830-073 | 21.39 | 50 | 1.46 | 0.53 | 0.41 | HS |
| 3/4 x 1/2 | ^9830-101 | 22.92 | 25 | 1.69 | 0.55 | 0.53 | HS |
| 1 x 1/2 | ^9830-130 | 22.92 | 25 | 1.83 | 0.68 | 0.53 | HS |
| 1 x 3/4 | ^9830-131 | 27.64 | 25 | 1.88 | 0.68 | 0.55 | HS |
| 1 1/2 x 1 | ^9830-211 | 53.81 | 20 | 1.91 | 0.71 | 0.55 | HS |

Dimensions are subject to change. Please see online "Price Lists" at <http://www.gfpiping.com> for up-to-date information.



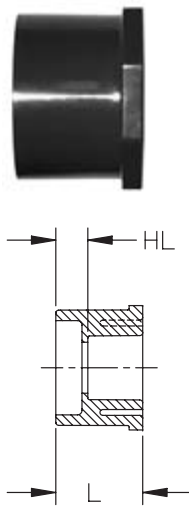
Female Adapter (SxFPT)

| Size | Part Number | List \$/ea. | Std. Pack | HL | L | T | Design |
|-------|-------------|-------------|-----------|------|------|------|--------|
| 1/4 | 9835-002 | 15.39 | 50 | 0.75 | 1.43 | 0.40 | HS |
| 1/2 | 9835-005 | 7.62 | 25 | 0.91 | 1.79 | 0.53 | HS |
| 3/4 | 9835-007 | 8.07 | 20 | 0.95 | 1.96 | 0.55 | HS |
| 1 | 9835-010 | 18.62 | 25 | 1.11 | 2.26 | 0.68 | HS |
| 1 1/4 | 9835-012 | 19.07 | 10 | 1.16 | 2.44 | 0.71 | HS |
| 1 1/2 | 9835-015 | 22.20 | 10 | 1.19 | 2.58 | 0.72 | HS |
| 2 | 9835-020 | 38.26 | 5 | 1.23 | 2.74 | 0.76 | HS |
| 3 | 9835-030 | 150.60 | 5 | 1.91 | 3.82 | 1.20 | HS |
| 4 | 9835-040 | 250.67 | 5 | 2.02 | 4.29 | 1.30 | HS |



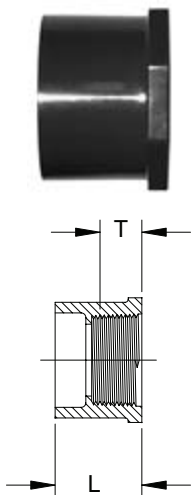
Male Adapter (SxMPT)

| Size | Part Number | List \$/ea. | Std. Pack | HL | L | Design |
|-------|-------------|-------------|-----------|------|------|--------|
| 1/2 | 9836-005 | 6.10 | 50 | 0.98 | 1.86 | HS |
| 3/4 | 9836-007 | 7.48 | 25 | 1.00 | 2.04 | HS |
| 1 | 9836-010 | 12.51 | 25 | 1.21 | 2.39 | HS |
| 1 1/4 | 9836-012 | 18.46 | 15 | 1.29 | 2.56 | HS |
| 1 1/2 | 9836-015 | 24.94 | 15 | 1.32 | 2.72 | HS |
| 2 | 9836-020 | 34.57 | 5 | 1.35 | 2.88 | HS |
| 3 | 9836-030 | 126.69 | 5 | 2.02 | 3.92 | HS |
| 4 | 9836-040 | 214.19 | 1 | 2.08 | 4.40 | HS |



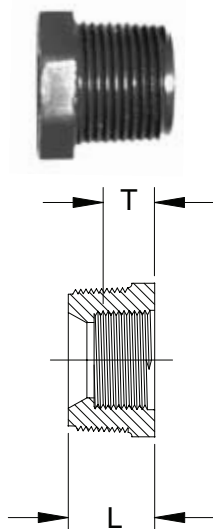
Flush Style Reducer Bushing (SpgxS)

| Size | Part Number | List \$/ea. | Std. Pack | HL | L |
|---------------|-------------|-------------|-----------|------|------|
| 1/2 x 1/4 | 9837-072 | 9.87 | 50 | 0.46 | 1.14 |
| 1/2 x 3/8 | 9837-073 | 9.87 | 50 | 0.32 | 1.10 |
| 3/4 x 1/2 | 9837-101 | 5.04 | 50 | 0.40 | 1.29 |
| 1 x 1/2 | 9837-130 | 7.80 | 50 | 0.54 | 1.42 |
| 1 x 3/4 | 9837-131 | 7.80 | 50 | 0.44 | 1.42 |
| 1 1/4 x 1/2 | 9837-166 | 20.77 | 25 | 0.66 | 1.56 |
| 1 1/4 x 3/4 | 9837-167 | 20.77 | 25 | 0.55 | 1.57 |
| 1 1/4 x 1 | 9837-168 | 20.77 | 25 | 0.42 | 1.57 |
| 1 1/2 x 1/2 | 9837-209 | 23.46 | 25 | 0.77 | 1.68 |
| 1 1/2 x 3/4 | 9837-210 | 23.46 | 25 | 0.67 | 1.69 |
| 1 1/2 x 1 | 9837-211 | 23.46 | 25 | 0.55 | 1.68 |
| 1 1/2 x 1 1/4 | 9837-212 | 23.46 | 25 | 0.42 | 1.70 |
| 2 x 1/2 | 9837-247 | 30.30 | 10 | 0.88 | 1.79 |
| 2 x 3/4 | 9837-248 | 30.30 | 25 | 0.78 | 1.81 |
| 2 x 1 | 9837-249 | 30.30 | 25 | 0.66 | 1.81 |
| 2 x 1 1/4 | 9837-250 | 30.30 | 10 | 0.56 | 1.82 |
| 2 x 1 1/2 | 9837-251 | 30.30 | 10 | 0.40 | 1.80 |
| 2 1/2 x 1 1/2 | 9837-291 | 36.87 | 5 | 0.96 | 2.43 |
| 2 1/2 x 2 | 9837-292 | 36.87 | 5 | 0.55 | 2.13 |
| 3 x 1 1/2 | 9837-337 | 57.40 | 5 | 0.92 | 2.43 |
| 3 x 2 | 9837-338 | 56.21 | 5 | 0.87 | 2.43 |
| 3 x 2 1/2 | 9837-339 | 56.21 | 5 | 0.39 | 2.23 |
| 4 x 2 | 9837-420 | 62.13 | 5 | 1.15 | 2.72 |
| 4 x 3 | 9837-422 | 62.13 | 5 | 0.77 | 2.76 |
| 6 x 3 | 9837-530 | 129.34 | 2 | 1.45 | 3.59 |
| 6 x 4 | 9837-532 | 132.38 | 2 | 2.57 | 6.92 |
| 8 x 6 | 9837-585 | 445.13 | 1 | 1.56 | 4.66 |



Flush Style Reducer Bushing (SpgxFPT)

| Size | Part Number | List \$/ea. | Std. Pack | L | T |
|---------------|-------------|-------------|-----------|------|------|
| 1/2 x 1/4 | 9838-072 | 10.60 | 50 | 1.14 | 0.40 |
| 1/2 x 3/8 | 9838-073 | 10.60 | 50 | 1.12 | 0.41 |
| 3/4 x 1/4 | 9838-098 | 12.08 | 50 | 1.21 | 0.40 |
| 3/4 x 1/2 | 9838-101 | 5.50 | 50 | 1.28 | 0.53 |
| 1 x 1/2 | 9838-130 | 6.98 | 50 | 1.42 | 0.53 |
| 1 x 3/4 | 9838-131 | 6.98 | 50 | 1.41 | 0.55 |
| 1 1/4 x 1/2 | 9838-166 | 22.48 | 15 | 1.53 | 0.53 |
| 1 1/4 x 3/4 | 9838-167 | 22.48 | 15 | 1.56 | 0.55 |
| 1 1/4 x 1 | 9838-168 | 22.48 | 15 | 1.55 | 0.68 |
| 1 1/2 x 1/2 | 9838-209 | 27.69 | 15 | 1.68 | 0.53 |
| 1 1/2 x 3/4 | 9838-210 | 27.69 | 15 | 1.68 | 0.55 |
| 1 1/2 x 1 | 9838-211 | 27.69 | 15 | 1.69 | 0.68 |
| 1 1/2 x 1 1/4 | 9838-212 | 27.69 | 25 | 1.68 | 0.71 |
| 2 x 1/2 | 9838-247 | 38.06 | 10 | 1.80 | 0.53 |
| 2 x 3/4 | 9838-248 | 38.06 | 10 | 1.80 | 0.55 |
| 2 x 1 | 9838-249 | 38.06 | 10 | 1.79 | 0.68 |
| 2 x 1 1/4 | 9838-250 | 38.06 | 10 | 1.78 | 0.71 |
| 2 x 1 1/2 | 9838-251 | 38.06 | 10 | 1.79 | 0.72 |
| 2 1/2 x 1 1/2 | 9838-291 | 60.47 | 5 | 2.11 | 0.72 |
| 2 1/2 x 2 | 9838-292 | 60.47 | 5 | 2.20 | 0.76 |
| 3 x 2 | 9838-338 | 134.81 | 5 | 2.44 | 0.76 |
| 4 x 2 | 9838-420 | 274.67 | 5 | 2.73 | 0.76 |
| 4 x 3 | 9838-422 | 274.67 | 5 | 2.75 | 0.38 |



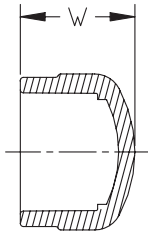
Flush Style Reducer Bushing (MPTxFPT)

| Size | Part Number | List \$/ea. | Std. Pack | L | T |
|---------------|-------------|-------------|-----------|------|------|
| 3/8 x 1/4 | ^9839-052 | 14.56 | 50 | 0.79 | 0.40 |
| 1/2 x 1/4 | ^9839-072 | 14.56 | 50 | 0.96 | 0.40 |
| 1/2 x 3/8 | ^9839-073 | 6.89 | 50 | 0.94 | 0.41 |
| 3/4 x 3/8 | ^9839-099 | 6.89 | 50 | 1.02 | 0.41 |
| 3/4 x 1/2 | ^9839-101 | 11.63 | 50 | 1.08 | 0.53 |
| 1 x 1/2 | ^9839-130 | 11.63 | 25 | 1.24 | 0.53 |
| 1 x 3/4 | ^9839-131 | 22.90 | 50 | 1.27 | 0.55 |
| 1 1/4 x 1 | ^9839-168 | 27.79 | 25 | 1.30 | 0.68 |
| 1 1/2 x 3/4 | ^9839-210 | 27.79 | 25 | 1.33 | 0.55 |
| 1 1/2 x 1 | ^9839-211 | 27.58 | 50 | 1.34 | 0.68 |
| 1 1/2 x 1 1/4 | ^9839-212 | 27.58 | 10 | 1.32 | 0.71 |
| 2 x 1 | ^9839-249 | 29.61 | 10 | 1.43 | 0.68 |
| 2 x 1 1/4 | ^9839-250 | 30.74 | 10 | 1.43 | 0.71 |
| 2 x 1 1/2 | ^9839-251 | 27.58 | 10 | 1.35 | 0.72 |

^ = 40% Restock Charge

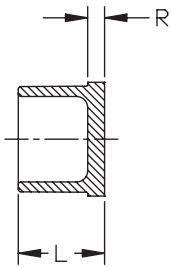
* = Non-Cancelable / Non-Returnable

Dimensions are subject to change. Please see online "Price Lists" at <http://www.gfpiping.com> for up-to-date information.



Cap (S)

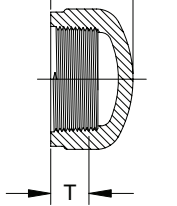
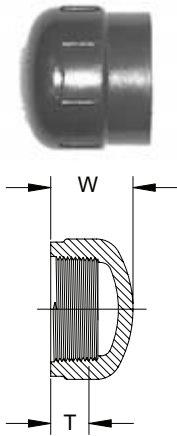
| Size | Part Number | List \$/ea. | Std. Pack | W | Design |
|-------|-------------|---------------|-----------|------|--------|
| 1/2 | 9847-005 | 7.38 | 50 | 1.29 | HS |
| 3/4 | 9847-007 | 10.48 | 25 | 1.46 | HS |
| 1 | 9847-010 | 18.53 | 25 | 1.67 | HS |
| 1 1/4 | 9847-012 | 20.28 | 15 | 1.88 | HS |
| 1 1/2 | 9847-015 | 20.28 | 10 | 2.09 | HS |
| 2 | 9847-020 | 21.38 | 5 | 2.32 | HS |
| 2 1/2 | 9847-025 | 71.96 | 5 | 2.73 | HS |
| 3 | 9847-030 | 78.90 | 5 | 3.05 | HS |
| 4 | 9847-040 | 80.20 | 5 | 3.67 | HS |
| 6 | 9847-060 | 265.36 | 2 | 4.96 | HS |
| 8 | 9847-080 | 805.29 | 2 | 7.02 | HS |



Plug (Spg)

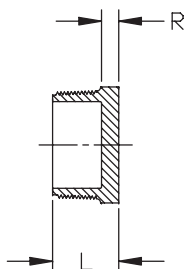
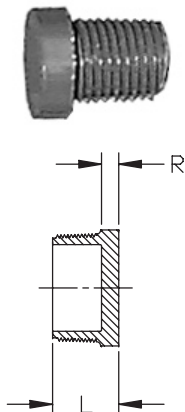
| Size | Part Number | List \$/ea. | Std. Pack | L | R |
|-------|-------------|-------------|-----------|------|------|
| 1/2 | 9849-005 | 6.55 | 50 | 1.09 | 0.20 |
| 3/4 | | | | | |
| 1 | | | | | |
| 1 1/2 | | | | | |
| 2 | | | | | |
| 4 | | | | | |

Cap (FPT)

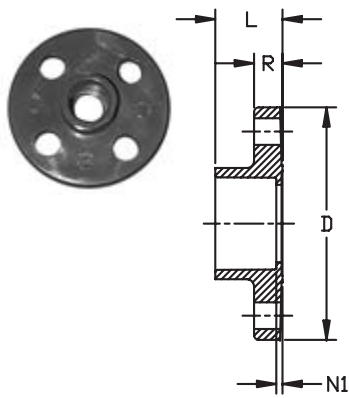


| Size | Part Number | List \$/ea. | Std. Pack | W | T | Design |
|-------|-------------|--------------|-----------|------|------|--------|
| 1/4 | ^9848-002 | 9.51 | 50 | 0.93 | 0.40 | HS |
| 3/8 | ^9848-003 | 9.51 | 50 | 0.95 | 0.41 | HS |
| 1/2 | ^9848-005 | 8.16 | 50 | 1.16 | 0.53 | HS |
| 3/4 | ^9848-007 | 13.54 | 25 | 1.24 | 0.55 | HS |
| 1 | ^9848-010 | 18.92 | 25 | 1.50 | 0.68 | HS |
| 1 1/4 | ^9848-012 | 33.73 | 15 | 1.61 | 0.71 | HS |
| 1 1/2 | ^9848-015 | 34.60 | 10 | 1.66 | 0.72 | HS |
| 2 | ^9848-020 | 49.78 | 5 | 1.84 | 0.76 | HS |

Plug (MPT)

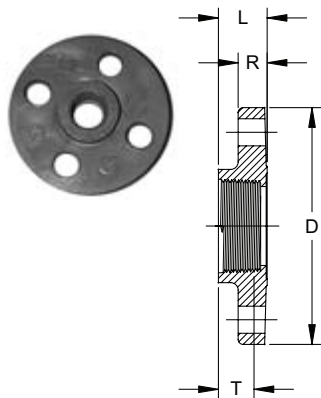


| Size | Part Number | List \$/ea. | Std. Pack | L | R |
|-------|-------------|--------------|-----------|------|------|
| 1/4 | 9850-002 | 7.63 | 50 | 0.81 | 0.22 |
| 3/8 | 9850-003 | 7.63 | 50 | 0.83 | 0.22 |
| 1/2 | 9850-005 | 6.63 | 50 | 0.97 | 0.22 |
| 3/4 | 9850-007 | 8.42 | 50 | 1.04 | 0.25 |
| 1 | 9850-010 | 13.82 | 25 | 1.25 | 0.27 |
| 1 1/2 | 9850-015 | 17.33 | 20 | 1.38 | 0.34 |
| 2 | 9850-020 | 23.60 | 10 | 1.46 | 0.40 |
| 2 1/2 | 9850-025 | 40.10 | 10 | 2.00 | 0.38 |
| 3 | 9850-030 | 43.82 | 5 | 2.00 | 0.38 |
| 4 | 9850-040 | 50.76 | 5 | 2.15 | 0.39 |



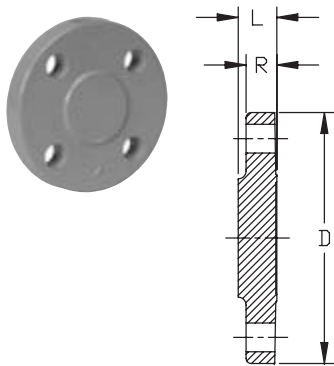
Flange (S)

| Size | Part Number | List \$/ea. | Std. Pack | # of Holes | Bolt Dia. | Bolt Circle Dia. | D | L | N1 | R |
|-------|-------------|-------------|-----------|------------|-----------|------------------|-------|------|------|------|
| 1/2 | 9851-005 | 19.86 | 5 | 4 | 1/2 | 2.38 | 3.50 | 1.03 | 0.15 | 0.43 |
| 3/4 | 9851-007 | 20.34 | 5 | 4 | 1/2 | 2.75 | 3.88 | 1.21 | 0.19 | 0.44 |
| 1 | 9851-010 | 22.21 | 5 | 4 | 1/2 | 3.13 | 4.25 | 1.28 | 0.15 | 0.57 |
| 1 1/4 | 9851-012 | 27.09 | 5 | 4 | 1/2 | 3.50 | 4.63 | 1.42 | 0.16 | 0.56 |
| 1 1/2 | 9851-015 | 30.08 | 5 | 4 | 1/2 | 3.88 | 5.00 | 1.54 | 0.16 | 0.71 |
| 2 | 9851-020 | 36.41 | 5 | 4 | 5/8 | 4.75 | 6.00 | 1.77 | 0.16 | 0.74 |
| 2 1/2 | 9851-025 | 75.43 | 5 | 4 | 5/8 | 5.50 | 7.00 | 2.01 | 0.19 | 0.89 |
| 3 | 9851-030 | 78.90 | 5 | 4 | 5/8 | 6.00 | 7.50 | 2.20 | 0.31 | 1.12 |
| 4 | 9851-040 | 106.59 | 5 | 8 | 5/8 | 7.50 | 9.00 | 2.55 | 0.22 | 1.27 |
| 6 | 9851-060 | 181.56 | 1 | 8 | 3/4 | 9.50 | 11.00 | 3.86 | 0.34 | 1.45 |



Flange (FPT)

| Size | Part Number | List \$/ea. | Std. Pack | # of Holes | Bolt Dia. | Bolt Circle Dia. | D | L | T | R |
|-------|-------------|-------------|-----------|------------|-----------|------------------|------|------|------|------|
| 1/2 | ^9852-005 | 27.77 | 5 | 4 | 1/2 | 2.38 | 3.50 | 0.94 | 0.53 | 0.44 |
| 3/4 | ^9852-007 | 33.70 | 5 | 4 | 1/2 | 2.75 | 3.88 | 0.95 | 0.55 | 0.51 |
| 1 | ^9852-010 | 36.78 | 5 | 4 | 1/2 | 3.13 | 4.25 | 1.13 | 0.68 | 0.55 |
| 1 1/4 | ^9852-012 | 50.00 | 5 | 4 | 1/2 | 3.50 | 4.63 | 1.19 | 0.71 | 0.63 |
| 1 1/2 | ^9852-015 | 54.02 | 5 | 4 | 1/2 | 3.88 | 5.00 | 1.21 | 0.72 | 0.72 |
| 2 | ^9852-020 | 55.01 | 5 | 4 | 5/8 | 4.75 | 6.00 | 1.23 | 0.76 | 0.75 |
| 3 | ^9852-030 | 88.59 | 5 | 4 | 5/8 | 6.00 | 7.50 | 1.88 | 1.20 | 0.98 |
| 4 | ^9852-040 | 137.73 | 5 | 8 | 5/8 | 7.50 | 9.00 | 1.99 | 1.30 | 1.24 |



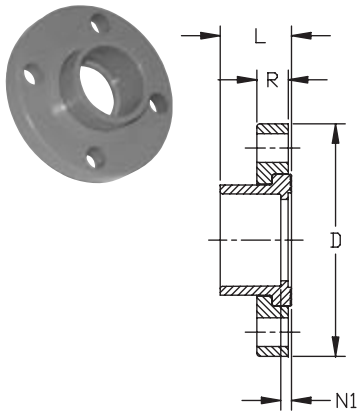
Flange (Blind)

| Size | Part Number | List \$/ea. | Std. Pack | # of Holes | Bolt Dia. | Bolt Circle Dia. | D | L | R |
|-------|-------------|-------------|-----------|------------|-----------|------------------|-------|------|------|
| 1/2 | 9853-005 | 30.43 | 5 | 4 | 1/2 | 2.38 | 3.50 | 0.50 | 0.43 |
| 3/4 | 9853-007 | 33.00 | 5 | 4 | 1/2 | 2.75 | 3.88 | 0.50 | 0.44 |
| 1 | 9853-010 | 41.13 | 5 | 4 | 1/2 | 3.13 | 4.25 | 0.60 | 0.57 |
| 1 1/4 | 9853-012 | 46.54 | 5 | 4 | 1/2 | 3.50 | 4.63 | 0.63 | 0.56 |
| 1 1/2 | 9853-015 | 63.76 | 5 | 4 | 1/2 | 3.88 | 5.00 | 0.82 | 0.71 |
| 2 | 9853-020 | 66.99 | 5 | 4 | 5/8 | 4.75 | 6.00 | 0.92 | 0.74 |
| 3 | 9853-030 | 100.53 | 5 | 4 | 5/8 | 6.00 | 7.50 | 1.03 | 0.89 |
| 4 | 9853-040 | 170.63 | 5 | 8 | 5/8 | 7.50 | 9.00 | 1.35 | 1.12 |
| 6 | 9853-060 | 292.36 | 1 | 8 | 3/4 | 9.50 | 11.00 | 1.49 | 1.27 |
| 8 | 9853-080 | 542.32 | 1 | 8 | 3/4 | 11.75 | 13.50 | 1.63 | 1.45 |

^ = 40% Restock Charge

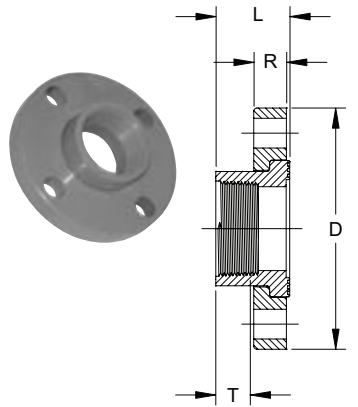
* = Non-Cancelable / Non-Returnable

Dimensions are subject to change. Please see online "Price Lists" at <http://www.gfpiping.com> for up-to-date information.



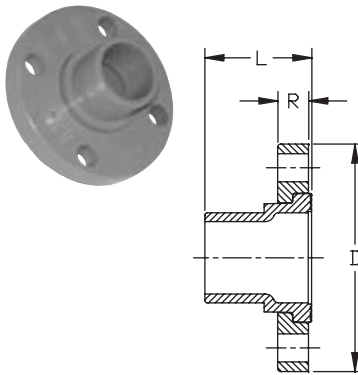
Van Stone Flange (S)

| Size | Part Number | List \$/ea. | Std. Pack | # of Holes | Bolt Dia. | Bolt Circle Dia. | D | L | N1 | R |
|-------|-------------|-------------|-----------|------------|-----------|------------------|-------|------|------|------|
| 1/2 | 9854-005 | 20.01 | 5 | 4 | 1/2 | 2.38 | 3.50 | 1.03 | 0.11 | 0.57 |
| 3/4 | 9854-007 | 20.44 | 5 | 4 | 1/2 | 2.75 | 3.88 | 1.15 | 0.13 | 0.58 |
| 1 | 9854-010 | 22.34 | 5 | 4 | 1/2 | 3.13 | 4.25 | 1.39 | 0.13 | 0.66 |
| 1 1/4 | 9854-012 | 27.28 | 5 | 4 | 1/2 | 3.50 | 4.63 | 1.45 | 0.14 | 0.69 |
| 1 1/2 | 9854-015 | 30.30 | 5 | 4 | 1/2 | 3.88 | 5.00 | 1.59 | 0.15 | 0.76 |
| 2 | 9854-020 | 36.66 | 5 | 4 | 5/8 | 4.75 | 6.00 | 1.76 | 0.20 | 0.82 |
| 2 1/2 | 9854-025 | 75.97 | 5 | 4 | 5/8 | 5.50 | 7.00 | 2.05 | 0.22 | 0.98 |
| 3 | 9854-030 | 79.54 | 5 | 4 | 5/8 | 6.00 | 7.50 | 2.25 | 0.30 | 1.02 |
| 4 | 9854-040 | 107.43 | 5 | 8 | 5/8 | 7.50 | 9.00 | 2.65 | 0.34 | 1.11 |
| 6 | 9854-060 | 183.04 | 1 | 8 | 3/4 | 9.50 | 11.00 | 3.45 | 0.35 | 1.37 |
| 8 | 9854-080 | 550.78 | 1 | 8 | 3/4 | 11.75 | 13.50 | 4.50 | 0.40 | 1.73 |



Van Stone Flange (FPT)

| Size | Part Number | List \$/ea. | Std. Pack | # of Holes | Bolt Dia. | Bolt Circle Dia. | D | L | T | R |
|-------|-------------|-------------|-----------|------------|-----------|------------------|------|------|------|------|
| 1 | ^9855-010 | 37.03 | 5 | 4 | 1/2 | 3.13 | 4.25 | 1.38 | 0.68 | 0.66 |
| 1 1/4 | ^9855-012 | 50.97 | 5 | 4 | 1/2 | 3.50 | 4.63 | 1.49 | 0.71 | 0.69 |
| 1 1/2 | ^9855-015 | 54.40 | 5 | 4 | 1/2 | 3.88 | 5.00 | 1.61 | 0.72 | 0.76 |
| 2 | ^9855-020 | 55.41 | 5 | 4 | 5/8 | 4.75 | 6.00 | 1.75 | 0.76 | 0.82 |



Van Stone Flange (Spg)

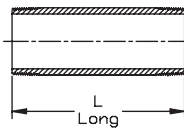
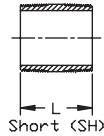
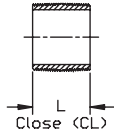
| Size | Part Number | List \$/ea. | Std. Pack | # of Holes | Bolt Dia. | Bolt Circle Dia. | D | L | R |
|-------|-------------|-------------|-----------|------------|-----------|------------------|------|------|------|
| 1/2 | 9856-005 | 23.14 | 5 | 4 | 1/2 | 2.38 | 3.50 | 1.65 | 0.57 |
| 3/4 | 9856-007 | 24.82 | 5 | 4 | 1/2 | 2.75 | 3.88 | 1.78 | 0.58 |
| 1 | 9856-010 | 28.20 | 5 | 4 | 1/2 | 3.13 | 4.25 | 2.02 | 0.66 |
| 1 1/4 | 9856-012 | 34.89 | 5 | 4 | 1/2 | 3.50 | 4.63 | 2.20 | 0.69 |
| 1 1/2 | 9856-015 | 38.60 | 5 | 4 | 1/2 | 3.88 | 5.00 | 2.40 | 0.76 |
| 2 | 9856-020 | 54.02 | 5 | 4 | 5/8 | 4.75 | 6.00 | 2.72 | 0.82 |
| 2 1/2 | 9856-025 | 80.34 | 5 | 4 | 5/8 | 5.50 | 7.00 | 3.19 | 0.98 |
| 3 | 9856-030 | 87.99 | 5 | 4 | 5/8 | 6.00 | 7.50 | 3.52 | 1.02 |
| 4 | 9856-040 | 90.54 | 5 | 8 | 5/8 | 7.50 | 9.00 | 4.02 | 1.11 |

^ = 40% Restock Charge

* = Non-Cancelable / Non-Returnable

Dimensions are subject to change. Please see online "Price Lists" at <http://www.gfpiping.com> for up-to-date information.

Nipple (MPT x MPT)

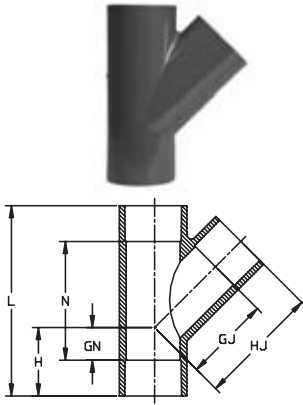


| Size | Part Number | List \$/ea. | Std. Pack | L |
|------------|-------------|-------------|-----------|------|
| 1/2 x CL | *9861-077 | 3.18 | 50 | 1.13 |
| 1/2 x SH | *9861-015 | 2.82 | 50 | 1.13 |
| 1/2 x 2 | *9861-079 | 6.06 | 50 | 2.00 |
| 1/2 x 3 | *9861-081 | 5.22 | 50 | 3.00 |
| 1/2 x 4 | *9861-082 | 5.19 | 50 | 4.00 |
| 1/2 x 5 | *9861-083 | 6.04 | 50 | 5.00 |
| 1/2 x 6 | *9861-084 | 11.06 | 50 | 6.00 |
| 3/4 x CL | *9861-104 | 5.69 | 25 | 1.38 |
| 3/4 x 2 | *9861-020 | 4.08 | 25 | 2.00 |
| 3/4 x 3 | *9861-106 | 11.81 | 25 | 3.00 |
| 3/4 x 4 | *9861-107 | 6.56 | 25 | 4.00 |
| 3/4 x 5 | *9861-108 | 7.79 | 25 | 5.00 |
| 3/4 x 6 | *9861-109 | 23.84 | 25 | 6.00 |
| 1 x CL | *9861-133 | 9.11 | 25 | 1.50 |
| 1 x SH | *9861-134 | 11.81 | 25 | 2.00 |
| 1 x 3 | *9861-135 | 7.17 | 25 | 3.00 |
| 1 x 4 | *9861-136 | 9.70 | 25 | 4.00 |
| 1 x 5 | *9861-137 | 10.87 | 25 | 5.00 |
| 1 x 6 | *9861-138 | 35.10 | 25 | 6.00 |
| 1 1/4 x CL | *9861-170 | 6.56 | 25 | 1.63 |
| 1 1/4 x SH | *9861-171 | 16.48 | 25 | 2.50 |
| 1 1/4 x 3 | *9861-172 | 9.63 | 25 | 3.00 |
| 1 1/4 x 4 | *9861-173 | 11.98 | 25 | 4.00 |
| 1 1/4 x 5 | *9861-174 | 14.46 | 25 | 5.00 |
| 1 1/4 x 6 | *9861-175 | 16.93 | 25 | 6.00 |
| 1 1/2 x CL | *9861-213 | 17.60 | 25 | 1.75 |
| 1 1/2 x SH | *9861-214 | 19.96 | 25 | 2.50 |
| 1 1/2 x 3 | *9861-215 | 10.62 | 25 | 3.00 |
| 1 1/2 x 4 | *9861-216 | 22.10 | 25 | 4.00 |
| 1 1/2 x 5 | *9861-217 | 16.06 | 25 | 5.00 |
| 1 1/2 x 6 | *9861-218 | 58.68 | 25 | 6.00 |
| 2 x CL | *9861-251 | 26.63 | 25 | 2.00 |
| 2 x SH | *9861-252 | 33.00 | 25 | 2.50 |
| 2 x 3 | *9861-253 | 39.18 | 25 | 3.00 |
| 2 x 4 | *9861-254 | 18.29 | 25 | 4.00 |
| 2 x 5 | *9861-255 | 21.99 | 25 | 5.00 |
| 2 x 6 | *9861-256 | 58.72 | 25 | 6.00 |
| 2 1/2 x CL | *9861-291 | 20.01 | 5 | 2.50 |
| 2 1/2 x SH | *9861-292 | 20.13 | 5 | 3.00 |
| 2 1/2 x 4 | *9861-295 | 28.54 | 5 | 4.00 |
| 2 1/2 x 5 | *9861-296 | 34.22 | 5 | 5.00 |
| 2 1/2 x 6 | *9861-297 | 40.64 | 5 | 6.00 |
| 3 x CL | *9861-338 | 28.18 | 5 | 2.63 |
| 3 x SH | *9861-340 | 28.67 | 5 | 3.00 |
| 3 x 4 | *9861-341 | 35.09 | 5 | 4.00 |
| 3 x 5 | *9861-342 | 43.74 | 5 | 5.00 |
| 3 x 6 | *9861-343 | 18.68 | 5 | 6.00 |
| 4 x CL | *9861-422 | 39.54 | 5 | 2.88 |
| 4 x SH | *9861-423 | 50.90 | 5 | 4.00 |
| 4 x 5 | *9861-425 | 62.14 | 5 | 5.00 |
| 4 x 6 | *9861-426 | 74.38 | 5 | 6.00 |

^ = 40% Restock Charge

* = Non-Cancelable / Non-Returnable

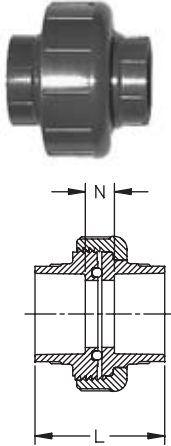
Dimensions are subject to change. Please see online "Price Lists" at <http://www.gfpiping.com> for up-to-date information.



45° Wye (SxSxS)

| Size | Part Number | List \$/ea. | Std. Pack | GJ | GN | H | HJ | L | N | Design |
|-------|-------------|---------------|-----------|------|------|------|-------|-------|-------|--------|
| 1½ | *9870-015 | 45.98 | 20 | 2.56 | 0.47 | 1.47 | 1.97 | 5.81 | 2.59 | HS |
| 2 | *9870-020 | 131.91 | 10 | 3.19 | 0.63 | 2.13 | 4.69 | 6.88 | 3.19 | HS |
| 3 | 9870-030 | 424.10 | 4 | 5.00 | 1.66 | 3.55 | 6.88 | 10.43 | 6.63 | SL |
| 4 | 9870-040 | 448.50 | 4 | 6.38 | 1.84 | 4.20 | 8.75 | 12.96 | 8.25 | SL |
| 6 | 9870-060 | 613.75 | 2 | 8.50 | 1.81 | 4.86 | 11.59 | 16.50 | 10.39 | HS |
| 6 x 4 | 9870-532 | 480.00 | 1 | 7.18 | 1.87 | 4.91 | 9.45 | 16.50 | 10.39 | HS |

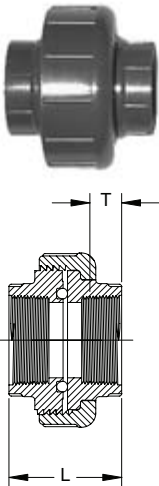
Rated 150psi at 73°F



Union (SxS)

| Size | Part Number | List \$/ea. | Std. Pack | L | N |
|------|-------------|---------------|-----------|------|------|
| ¼ | 9897-002 | 30.07 | 25 | 1.61 | 0.76 |
| ⅜ | 9897-003 | 30.07 | 25 | 1.91 | 0.77 |
| ½ | 9897-005 | 20.19 | 25 | 2.31 | 0.95 |
| ¾ | 9897-007 | 20.91 | 5 | 2.58 | 1.08 |
| 1 | 9897-010 | 25.03 | 5 | 2.89 | 1.25 |
| 1¼ | 9897-012 | 50.73 | 5 | 3.23 | 1.32 |
| 1½ | 9897-015 | 51.68 | 5 | 3.44 | 1.32 |
| 2 | 9897-020 | 85.63 | 2 | 3.77 | 1.51 |
| 3 | 9897-030 | 177.76 | 1 | 4.74 | 2.00 |
| 4 | 9897-040 | 232.20 | 1 | 5.62 | 2.05 |

O-Ring Material: EPDM



Union (FPTxFPT)

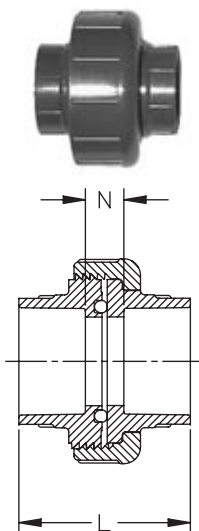
| Size | Part Number | List \$/ea. | Std. Pack | L | T |
|------|-------------|---------------|-----------|------|------|
| ⅜ | ^9898-003 | 33.81 | 25 | 1.58 | 0.41 |
| ½ | ^9898-005 | 21.42 | 25 | 2.03 | 0.53 |
| ¾ | ^9898-007 | 37.86 | 5 | 2.11 | 0.55 |
| 1 | ^9898-010 | 52.20 | 5 | 2.56 | 0.68 |
| 1¼ | ^9898-012 | 99.47 | 5 | 2.79 | 0.71 |
| 1½ | ^9898-015 | 99.47 | 5 | 2.72 | 0.72 |
| 2 | ^9898-020 | 112.44 | 2 | 2.89 | 0.76 |
| 3 | ^9898-030 | 356.26 | 1 | 4.69 | 1.20 |
| 4 | ^9898-040 | 374.86 | 1 | 5.62 | 1.30 |

O-Ring Material: EPDM

HS = High Strength Design
SL = Slim Line Design

^ = 40% Restock Charge
* = Non-Cancelable / Non-Returnable

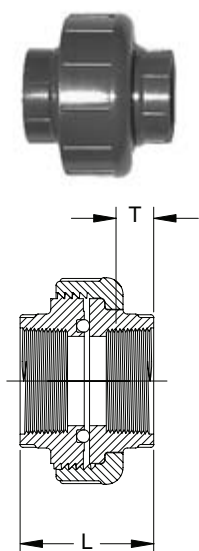
Dimensions are subject to change. Please see online "Price Lists" at <http://www.gfpiping.com> for up-to-date information.



Union (SxS)

| Size | Part Number | List \$/ea. | Std. Pack | L | N |
|-------|-------------|---------------|-----------|------|------|
| 1/4 | 9857-002 | 30.44 | 25 | 1.61 | 0.76 |
| 3/8 | 9857-003 | 30.44 | 25 | 1.91 | 0.77 |
| 1/2 | 9857-005 | 20.23 | 25 | 2.31 | 0.95 |
| 3/4 | 9857-007 | 21.17 | 5 | 2.58 | 1.08 |
| 1 | 9857-010 | 25.38 | 5 | 2.89 | 1.25 |
| 1 1/4 | 9857-012 | 51.37 | 5 | 3.23 | 1.32 |
| 1 1/2 | 9857-015 | 52.31 | 5 | 3.44 | 1.32 |
| 2 | 9857-020 | 86.71 | 2 | 3.77 | 1.51 |
| 3 | 9857-030 | 179.97 | 1 | 4.74 | 2.00 |
| 4 | 9857-040 | 234.87 | 1 | 5.62 | 2.05 |

O-Ring Material: FPM



Union (FPTxFPT)

| Size | Part Number | List \$/ea. | Std. Pack | L | T |
|-------|-------------|---------------|-----------|------|------|
| 3/8 | ^9858-003 | 34.22 | 25 | 1.58 | 0.41 |
| 1/2 | ^9858-005 | 21.71 | 25 | 2.03 | 0.53 |
| 3/4 | ^9858-007 | 38.34 | 5 | 2.11 | 0.55 |
| 1 | ^9858-010 | 52.86 | 5 | 2.56 | 0.68 |
| 1 1/4 | ^9858-012 | 100.71 | 5 | 2.79 | 0.71 |
| 1 1/2 | ^9858-015 | 100.71 | 5 | 2.72 | 0.72 |
| 2 | ^9858-020 | 113.84 | 2 | 2.89 | 0.76 |
| 3 | ^9858-030 | 360.58 | 1 | 4.69 | 1.20 |
| 4 | ^9858-040 | 382.07 | 1 | 5.62 | 1.30 |

O-Ring Material: FPM

^ = 40% Restock Charge

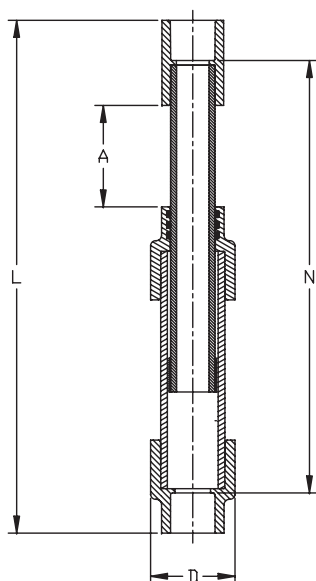
* = Non-Cancelable / Non-Returnable

Dimensions are subject to change. Please see online "Price Lists" at <http://www.gfpiping.com> for up-to-date information.

Schedule 80 CPVC Expansion Joint

P/L 34 : CPVC Pressure Expansion Joint

Flanged, spigot and threaded ends available. Contact factory for pricing and availability.



Expansion Joint 6" Travel (SxS)

| Size | Part Number | List \$/ea. | Std. Pack | A | D | L | N |
|-------|-------------|-------------|-----------|------|------|-------|-------|
| 1/2 | *9826-005X6 | 223.69 | 1 | 3.00 | 1.85 | 13.93 | 12.06 |
| 3/4 | *9826-007X6 | 245.61 | 1 | 3.00 | 2.23 | 14.40 | 12.46 |
| 1 | *9826-010X6 | 311.34 | 1 | 3.00 | 2.50 | 15.02 | 12.58 |
| 1 1/4 | *9826-012X6 | 302.92 | 1 | 3.00 | 2.50 | 15.81 | 13.05 |
| 1 1/2 | *9826-015X6 | 383.74 | 1 | 3.00 | 3.50 | 16.08 | 13.13 |
| 2 | *9826-020X6 | 501.68 | 1 | 3.00 | 4.39 | 18.10 | 14.88 |
| 3 | *9826-030X6 | 529.07 | 1 | 3.00 | 5.53 | 19.83 | 15.79 |
| 4 | *9826-040X6 | 838.77 | 1 | 3.00 | 7.93 | 27.56 | 23.01 |
| 6 | *9826-060X6 | 991.40 | 1 | 3.00 | 9.97 | 27.88 | 21.75 |

O-Ring Material: EPDM

Expansion Joint 12" Travel (SxS)

| Size | Part Number | List \$/ea. | Std. Pack | A | D | L | N |
|-------|--------------|-------------|-----------|------|------|-------|-------|
| 1/2 | *9826-005X12 | 227.78 | 1 | 6.00 | 1.85 | 22.93 | 21.06 |
| 3/4 | *9826-007X12 | 261.23 | 1 | 6.00 | 2.23 | 23.40 | 21.46 |
| 1 | *9826-010X12 | 278.71 | 1 | 6.00 | 2.50 | 24.02 | 21.58 |
| 1 1/4 | *9826-012X12 | 349.82 | 1 | 6.00 | 2.50 | 24.81 | 22.05 |
| 1 1/2 | *9826-015X12 | 441.81 | 1 | 6.00 | 3.50 | 25.08 | 22.13 |
| 2 | *9826-020X12 | 446.54 | 1 | 6.00 | 4.39 | 27.10 | 23.88 |
| 3 | *9826-030X12 | 543.28 | 1 | 6.00 | 5.53 | 28.83 | 24.79 |
| 4 | *9826-040X12 | 899.94 | 1 | 6.00 | 7.93 | 36.56 | 32.01 |
| 6 | *9826-060X12 | 991.29 | 1 | 6.00 | 9.97 | 36.88 | 30.75 |

O-Ring Material: EPDM

Expansion Joint 6" Travel (SxS)

| Size | Part Number | List \$/ea. | Std. Pack | A | D | L | N |
|-------|-------------|-------------|-----------|------|------|-------|-------|
| 1/2 | *9836-005X6 | 263.16 | 1 | 3.00 | 1.85 | 13.93 | 12.06 |
| 3/4 | *9836-007X6 | 287.96 | 1 | 3.00 | 2.23 | 14.40 | 12.46 |
| 1 | *9836-010X6 | 311.30 | 1 | 3.00 | 2.50 | 15.02 | 12.58 |
| 1 1/4 | *9836-012X6 | 356.38 | 1 | 3.00 | 2.50 | 15.81 | 13.05 |
| 1 1/2 | *9836-015X6 | 451.52 | 1 | 3.00 | 3.50 | 16.08 | 13.13 |
| 2 | *9836-020X6 | 474.86 | 1 | 3.00 | 4.39 | 18.10 | 14.88 |
| 3 | *9836-030X6 | 622.46 | 1 | 3.00 | 5.53 | 19.83 | 15.79 |
| 4 | *9836-040X6 | 986.82 | 1 | 3.00 | 7.93 | 27.56 | 23.01 |
| 6 | *9836-060X6 | 1,080.10 | 1 | 3.00 | 9.97 | 27.88 | 21.75 |

O-Ring Material: FPM

Expansion Joint 12" Travel (SxS)

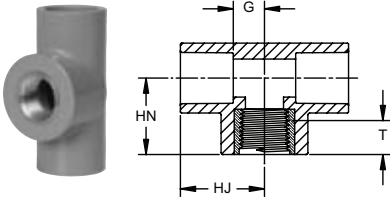
| Size | Part Number | List \$/ea. | Std. Pack | A | D | L | N |
|-------|--------------|-------------|-----------|------|------|-------|-------|
| 1/2 | *9836-005X12 | 268.01 | 1 | 6.00 | 1.85 | 22.93 | 21.06 |
| 3/4 | *9836-007X12 | 307.37 | 1 | 6.00 | 2.23 | 23.40 | 21.46 |
| 1 | *9836-010X12 | 327.90 | 1 | 6.00 | 2.50 | 24.02 | 21.58 |
| 1 1/4 | *9836-012X12 | 411.58 | 1 | 6.00 | 2.50 | 24.81 | 22.05 |
| 1 1/2 | *9836-015X12 | 519.77 | 1 | 6.00 | 3.50 | 25.08 | 22.13 |
| 2 | *9836-020X12 | 525.32 | 1 | 6.00 | 4.39 | 27.10 | 23.88 |
| 3 | *9836-030X12 | 639.18 | 1 | 6.00 | 5.53 | 28.83 | 24.79 |
| 4 | *9836-040X12 | 1,058.77 | 1 | 6.00 | 7.93 | 36.56 | 32.01 |
| 6 | *9836-060X12 | 1,166.38 | 1 | 6.00 | 9.97 | 36.88 | 30.75 |

O-Ring Material: FPM

^ = 40% Restock Charge
* = Non-Cancelable / Non-Returnable

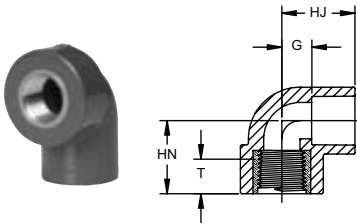
Schedule 80 CPVC Brass Insert Fittings

P/L 33 : CPVC Pressure Brass Insert Fittings



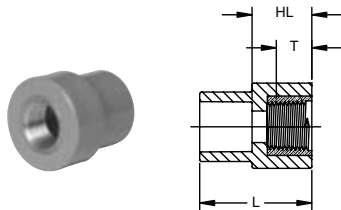
Tee (SxSxFPT Brass)

| Size | Part Number | List \$/ea. | Std. Pack | HJ | HN | G | T |
|-----------|-------------|--------------|-----------|------|------|------|------|
| 1/2 | *8120200806 | 26.90 | 20 | 1.44 | 1.09 | 0.53 | 0.53 |
| 3/4 x 1/2 | *8120200837 | 33.39 | 20 | 1.63 | 1.19 | 0.59 | 0.53 |



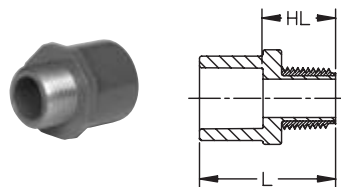
90° Ell (S x FPT Brass)

| Size | Part Number | List \$/ea. | Std. Pack | HJ | HN | G | T |
|-----------|-------------|--------------|-----------|------|------|------|------|
| 1/2 | *8120100806 | 23.69 | 20 | 1.44 | 1.09 | 0.53 | 0.53 |
| 3/4 x 1/2 | *8120100837 | 29.64 | 20 | 1.63 | 1.19 | 0.59 | 0.53 |



Coupling (SxFPT Brass)

| Size | Part Number | List \$/ea. | Std. Pack | HL | L | T |
|-----------|-------------|--------------|-----------|------|------|------|
| 1/2 | *8120910806 | 14.62 | 20 | 0.93 | 1.66 | 0.53 |
| 3/4 x 1/2 | *8120910837 | 21.17 | 20 | 0.86 | 1.78 | 0.53 |



Male Adapter (SxMPT Brass)

| Size | Part Number | List \$/ea. | Std. Pack | HL | L |
|------|-------------|--------------|-----------|------|------|
| 1/2 | *8120900806 | 14.62 | 25 | 0.92 | 1.65 |
| 3/4 | *8120900807 | 30.23 | 15 | 0.93 | 1.85 |
| 1 | *8120900808 | 53.04 | 15 | 1.02 | 2.05 |

^ = 40% Restock Charge

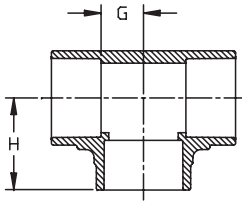
* = Non-Cancelable / Non-Returnable

Dimensions are subject to change. Please see online "Price Lists" at <http://www.gfpiping.com> for up-to-date information.

Schedule 80 CPVC

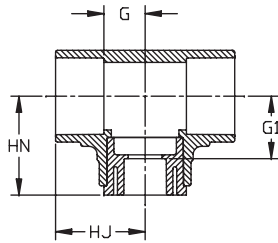
Schedule 80 CPVC Large Diameter Fittings

P/L 02 : CPVC Pressure LD Fittings - Molded



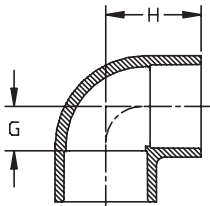
Tee (SxSxS)

| Size | Part Number | List \$/ea. | Std. Pack | H | G |
|------|-------------|-------------|-----------|-------|------|
| 10 | 9801-100 | 1,280.50 | 1 | 10.85 | 5.75 |
| 12 | 9801-120 | 1,990.25 | 1 | 13.39 | 6.89 |



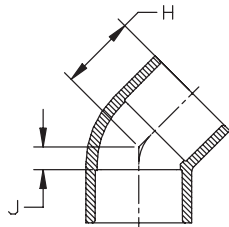
Reducing Tee (SxSxS)

| Size | Part Number | List \$/ea. | Std. Pack | HJ | HN | G | G1 |
|---------|-------------|-------------|-----------|-------|-------|------|------|
| 10 x 8 | *9801-628FB | 2,102.82 | 1 | 10.85 | 11.41 | 5.75 | 7.32 |
| 12 x 10 | *9801-670FB | 3,364.92 | 1 | 13.39 | 13.61 | 6.89 | 8.52 |



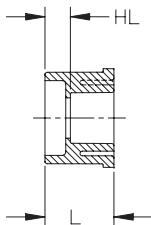
90° Ell (SxS)

| Size | Part Number | List \$/ea. | Std. Pack | H | G |
|------|-------------|-------------|-----------|-------|------|
| 10 | 9806-100 | 1187.50 | 1 | 10.70 | 5.67 |
| 12 | 9806-120 | 1606.50 | 1 | 13.39 | 6.89 |



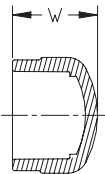
45° Ell (SxS)

| Size | Part Number | List \$/ea. | Std. Pack | H | J |
|------|-------------|-------------|-----------|------|------|
| 10 | 9817-100 | 908.00 | 1 | 8.11 | 2.61 |
| 12 | 9817-120 | 1597.50 | 1 | 9.58 | 3.08 |



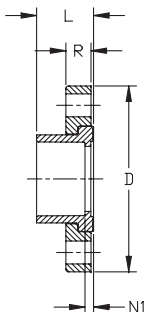
Flush Style Reducer Bushing (SpgxS)

| Size | Part Number | List \$/ea. | Std. Pack | HL | L |
|---------|-------------|-------------|-----------|------|------|
| 10 x 8 | 9837-628 | 564.21 | 1 | 1.57 | 5.66 |
| 12 x 10 | 9837-670 | 710.17 | 1 | 1.63 | 6.72 |



Cap (S)

| Size | Part Number | List \$/ea. | Std. Pack | W |
|------|-------------|-------------|-----------|------|
| 10 | 9847-100 | 491.00 | 1 | 7.88 |
| 12 | 9847-120 | 538.00 | 1 | 9.38 |



Van Stone Flange (S)

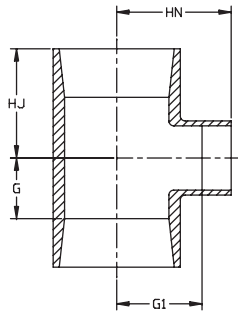
| Size | Part Number | List \$/ea. | Std. Pack | # of Holes | Bolt Dia. | Bolt Circle Dia. | D | L | N1 | R |
|------|-------------|-------------|-----------|------------|-----------|------------------|-------|------|------|------|
| 10 | 9854-100 | 823.45 | 1 | 12 | 7/8 | 14.25 | 16.00 | 5.63 | 0.50 | 1.73 |
| 12 | 9854-120 | 1,193.25 | 1 | 12 | 7/8 | 17.00 | 19.00 | 6.69 | 0.56 | 1.73 |

Schedule 80 CPVC Large Diameter Fittings

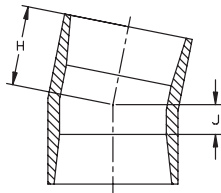
P/L 06 : CPVC Pressure LD Fittings - Fabricated

Schedule 80 CPVC

Reducing Tee (SxSxS)

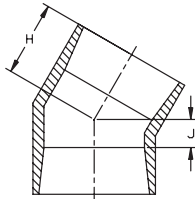


| Size | Part Number | List \$/ea. | Std. Pack | HJ | HN | G | G1 |
|--------|-------------|-----------------|-----------|-------|-------|------|-------|
| 10 x 2 | *9801-619H | 1,419.02 | 1 | 9.69 | 14.50 | 4.69 | 13.31 |
| 10 x 3 | *9801-621H | 1,549.61 | 1 | 10.25 | 15.00 | 5.25 | 13.25 |
| 10 x 4 | *9801-623H | 1,638.61 | 1 | 10.75 | 15.50 | 5.75 | 13.25 |
| 10 x 6 | *9801-626H | 1,842.39 | 1 | 11.81 | 16.50 | 6.81 | 13.19 |
| 12 x 2 | *9801-659H | 1,893.49 | 1 | 10.69 | 16.50 | 4.69 | 15.31 |
| 12 x 3 | *9801-661H | 2,139.59 | 1 | 11.25 | 17.00 | 5.25 | 15.25 |
| 12 x 4 | *9801-663H | 2,385.66 | 1 | 11.75 | 17.50 | 5.75 | 15.25 |
| 12 x 6 | *9801-666H | 2,628.39 | 1 | 12.81 | 18.50 | 6.81 | 15.19 |
| 12 x 8 | *9801-668H | 2,732.67 | 1 | 13.81 | 19.75 | 7.81 | 15.44 |



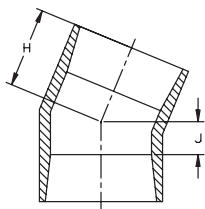
11¼° Ell (SxS)

| Size | Part Number | List \$/ea. | Std. Pack | H | J |
|------|-------------|-----------------|-----------|-------|------|
| 10 | *9811-100H | 995.17 | 1 | 10.81 | 5.81 |
| 12 | *9811-120H | 1,503.67 | 1 | 11.88 | 5.88 |



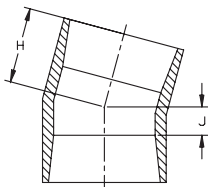
30° Ell (SxS)

| Size | Part Number | List \$/ea. | Std. Pack | H | J |
|------|-------------|-----------------|-----------|-------|------|
| 10 | *9815-100H | 1,054.24 | 1 | 12.25 | 7.25 |
| 12 | *9815-120H | 1,655.98 | 1 | 13.50 | 7.50 |



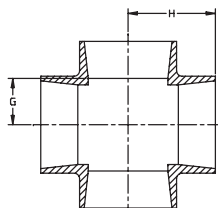
22½° Ell (SxS)

| Size | Part Number | List \$/ea. | Std. Pack | H | J |
|------|-------------|-----------------|-----------|-------|------|
| 10 | *9816-100H | 995.17 | 1 | 11.63 | 6.63 |
| 12 | *9816-120H | 1,503.67 | 1 | 12.88 | 6.88 |



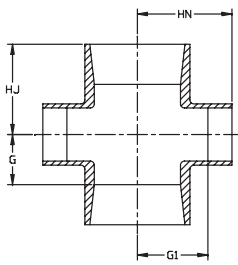
15° Ell (SxS)

| Size | Part Number | List \$/ea. | Std. Pack | H | J |
|------|-------------|-----------------|-----------|-------|------|
| 10 | *9818-100H | 1,195.34 | 1 | 11.38 | 6.38 |
| 12 | *9818-120H | 1,468.14 | 1 | 12.38 | 6.38 |



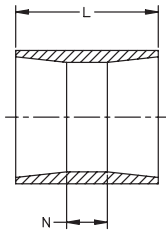
Cross (SxSxS)

| Size | Part Number | List \$/ea. | Std. Pack | H | J |
|------|-------------|-----------------|-----------|-------|------|
| 10 | *9820-100H | 2,363.88 | 1 | 19.25 | 8.88 |
| 12 | *9820-120H | 2,761.03 | 1 | 22.25 | 9.88 |



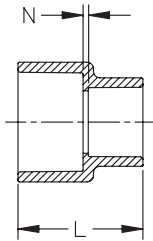
Reducing Cross (SxSxSxS)

| Size | Part Number | List \$/ea. | Std. Pack | HJ | HN | G | G1 |
|---------|-------------|-----------------|-----------|-------|-------|------|-------|
| 10 x 2 | *9820-619H | 1,309.54 | 1 | 9.69 | 14.50 | 4.69 | 13.31 |
| 10 x 3 | *9820-621H | 1,453.35 | 1 | 10.25 | 15.00 | 5.25 | 13.25 |
| 10 x 4 | *9820-623H | 1,787.61 | 1 | 10.75 | 15.50 | 5.75 | 13.25 |
| 10 x 6 | *9820-626H | 2,091.32 | 1 | 11.81 | 16.50 | 6.81 | 13.19 |
| 10 x 8 | *9820-628H | 2,508.33 | 1 | 12.81 | 17.75 | 7.81 | 13.44 |
| 12 x 2 | *9820-659H | 1,629.23 | 1 | 10.69 | 16.50 | 4.69 | 15.31 |
| 12 x 3 | *9820-661H | 1,798.82 | 1 | 11.25 | 17.00 | 5.25 | 15.25 |
| 12 x 4 | *9820-663H | 2,475.04 | 1 | 11.75 | 17.50 | 5.75 | 15.25 |
| 12 x 6 | *9820-666H | 2,817.68 | 1 | 12.81 | 18.50 | 6.81 | 15.19 |
| 12 x 8 | *9820-668H | 3,273.61 | 1 | 13.81 | 19.75 | 7.81 | 15.44 |
| 12 x 10 | *9820-670H | 4,147.96 | 1 | 14.88 | 21.25 | 8.88 | 15.88 |



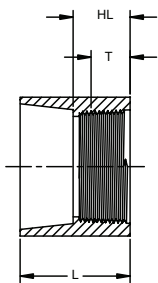
Coupling (SxS)

| Size | Part Number | List \$/ea. | Std. Pack | L | N |
|------|-------------|-----------------|-----------|-------|------|
| 10 | *9829-100H | 785.56 | 1 | 13.00 | 3.00 |
| 12 | *9829-120H | 1,289.48 | 1 | 15.00 | 3.00 |



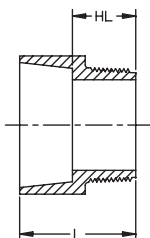
Reducing Coupling (SxS)

| Size | Part Number | List \$/ea. | Std. Pack | L | N |
|---------|-------------|-----------------|-----------|-------|------|
| 10 x 4 | *9829-623H | 785.56 | 1 | 16.25 | 9.25 |
| 10 x 6 | *9829-626H | 701.60 | 1 | 15.75 | 7.75 |
| 10 x 8 | *9829-628H | 431.28 | 1 | 14.00 | 5.00 |
| 12 x 8 | *9829-668H | 1,310.46 | 1 | 17.00 | 7.00 |
| 12 x 10 | *9829-670H | 1,094.20 | 1 | 17.00 | 6.00 |



Female Adapter (SxFPT)

| Size | Part Number | List \$/ea. | Std. Pack | HL | L | T |
|------|-------------|---------------|-----------|------|-------|------|
| 6 | *9835-060H | 551.08 | 1 | 4.50 | 7.50 | 1.51 |
| 8 | *9835-080H | 598.99 | 1 | 4.25 | 8.50 | 1.71 |
| 10 | *9835-100H | 752.55 | 1 | 5.00 | 10.00 | 1.93 |
| 12 | *9835-120H | 900.88 | 1 | 5.00 | 11.00 | 2.13 |



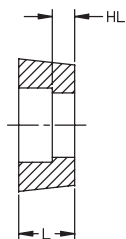
Male Adapter (SxMPT)

| Size | Part Number | List \$/ea. | Std. Pack | HL | L |
|------|-------------|---------------|-----------|------|-------|
| 6 | *9836-060H | 455.24 | 1 | 3.50 | 7.00 |
| 8 | *9836-080H | 517.53 | 1 | 4.00 | 8.00 |
| 10 | *9836-100H | 613.37 | 1 | 4.50 | 9.50 |
| 12 | *9836-120H | 673.08 | 1 | 5.50 | 11.50 |

^ = 40% Restock Charge

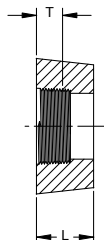
* = Non-Cancelable / Non-Returnable

Dimensions are subject to change. Please see online "Price Lists" at <http://www.gfpiping.com> for up-to-date information.



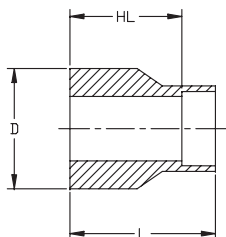
Flush Style Reducer Bushing (SpgxS)

| Size | Part Number | List \$/ea. | Std. Pack | HL | L |
|--------|-------------|-------------|-----------|------|------|
| 10 x 4 | *9837-623H | 1,413.62 | 1 | 3.00 | 5.00 |
| 10 x 6 | *9837-626H | 698.21 | 1 | 2.00 | 5.00 |
| 12 x 6 | *9837-666H | 1,884.55 | 1 | 3.00 | 5.00 |
| 12 x 8 | *9837-668H | 880.17 | 1 | 2.00 | 6.00 |



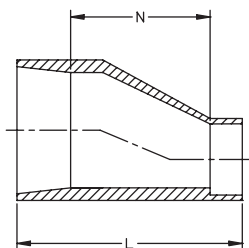
Flush Style Reducer Bushing (SpgxFPT)

| Size | Part Number | List \$/ea. | Std. Pack | L | T |
|---------|-------------|-------------|-----------|------|------|
| 10 x 6 | *9838-626H | 1,996.10 | 1 | 5.00 | 1.51 |
| 10 x 8 | *9838-628H | 1,131.12 | 1 | 5.00 | 1.71 |
| 12 x 8 | *9838-668H | 2,342.08 | 1 | 6.00 | 1.71 |
| 12 x 10 | *9838-670H | 2,108.30 | 1 | 6.00 | 1.93 |



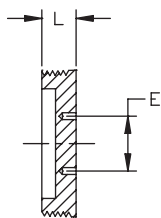
Extended Style Reducer Bushing (SpgxS)

| Size | Part Number | List \$/ea. | Std. Pack | D | HL | L |
|---------|-------------|-------------|-----------|-------|-------|-------|
| 10 x 6 | *9840-626H | 1,389.66 | 1 | 10.75 | 9.00 | 12.00 |
| 10 x 8 | *9840-628H | 891.29 | 1 | 10.75 | 6.50 | 10.50 |
| 12 x 8 | *9840-668H | 1,916.77 | 1 | 12.75 | 10.00 | 15.00 |
| 12 x 10 | *9840-670H | 1,030.27 | 1 | 12.75 | 7.25 | 12.25 |



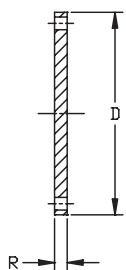
Eccentric Reducer (SxS)

| Size | Part Number | List \$/ea. | Std. Pack | L | N |
|---------|-------------|-------------|-----------|-------|-------|
| 10 x 4 | *9841-623H | 1,832.22 | 1 | 24.25 | 17.00 |
| 10 x 6 | *9841-626H | 1,775.84 | 1 | 15.25 | 7.25 |
| 10 x 8 | *9841-628H | 1,629.26 | 1 | 18.00 | 9.00 |
| 12 x 6 | *9841-666H | 1,758.90 | 1 | 24.00 | 9.25 |
| 12 x 8 | *9841-668H | 1,905.53 | 1 | 24.25 | 8.00 |
| 12 x 10 | *9841-670H | 2,001.37 | 1 | 21.00 | 3.25 |



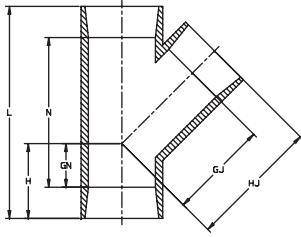
Plug (MPT)

| Size | Part Number | List \$/ea. | Std. Pack | E | L |
|------|-------------|-------------|-----------|------|------|
| 6 | *9850-060H | 383.35 | 1 | 4.00 | 1.00 |
| 8 | *9850-080H | 402.53 | 1 | 4.00 | 1.00 |
| 10 | *9850-100H | 426.48 | 1 | 4.00 | 1.00 |
| 12 | *9850-120H | 455.24 | 1 | 4.00 | 1.00 |



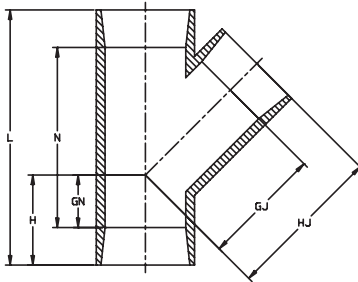
Flange (Blind)

| Size | Part Number | List \$/ea. | Std. Pack | # of Holes | Bolt Dia. | Bolt Corcle Dia. | D | R |
|------|-------------|-------------|-----------|------------|-----------|------------------|-------|------|
| 10 | *9853-100H | 866.61 | 1 | 12 | 7/8 | 14.25 | 16.00 | 1.00 |
| 12 | *9853-120H | 1,455.90 | 1 | 12 | 7/8 | 17.00 | 19.00 | 1.00 |



45° Wye (SxSxS)

| Size | Part Number | List \$/ea. | Std. Pack | GJ | GN | H | HJ | L | N |
|------|-------------|-----------------|-----------|-------|------|-------|-------|-------|-------|
| 10 | *9875-100H | 2,331.04 | 1 | 16.98 | 5.73 | 10.73 | 21.98 | 33.21 | 23.21 |
| 12 | *9875-120H | 3,313.92 | 1 | 19.39 | 6.14 | 12.14 | 25.39 | 38.03 | 26.03 |



Reducing 45° Wye (SxSxS)

| Size | Part Number | List \$/ea. | Std. Pack | GJ | GN | H | HJ | L | N |
|---------|-------------|-----------------|-----------|-------|-------|-------|-------|-------|-------|
| 10 x 2 | *9875-619H | 818.26 | 1 | 12.04 | -0.20 | 4.80 | 13.04 | 21.36 | 11.36 |
| 10 x 3 | *9875-621H | 909.25 | 1 | 12.80 | 0.60 | 5.60 | 14.10 | 22.95 | 12.95 |
| 10 x 4 | *9875-623H | 1,091.48 | 1 | 13.10 | 1.31 | 6.31 | 15.10 | 24.36 | 14.36 |
| 10 x 6 | *9875-626H | 1,219.75 | 1 | 14.16 | 2.81 | 7.81 | 17.16 | 27.37 | 17.37 |
| 10 x 8 | *9875-628H | 1,470.03 | 1 | 15.41 | 4.22 | 9.22 | 19.41 | 30.2 | 20.2 |
| 12 x 2 | *9875-659H | 1,131.02 | 1 | 13.45 | -1.20 | 4.80 | 14.45 | 23.36 | 11.36 |
| 12 x 3 | *9875-661H | 1,201.34 | 1 | 14.01 | -0.40 | 5.60 | 15.51 | 24.95 | 12.95 |
| 12 x 4 | *9875-663H | 1,764.64 | 1 | 14.51 | 0.31 | 6.31 | 16.51 | 26.36 | 14.36 |
| 12 x 6 | *9875-666H | 1,873.16 | 1 | 15.58 | 1.81 | 7.81 | 18.58 | 29.37 | 17.37 |
| 12 x 8 | *9875-668H | 2,492.60 | 1 | 16.83 | 3.22 | 9.22 | 20.83 | 32.2 | 20.2 |
| 12 x 10 | *9875-670H | 2,752.98 | 1 | 18.39 | 4.73 | 10.73 | 23.39 | 35.21 | 23.21 |

^ = 40% Restock Charge

* = Non-Cancelable / Non-Returnable

Dimensions are subject to change. Please see online "Price Lists" at <http://www.gfpping.com> for up-to-date information.

Manual Ball Valves

P/L 38 : Type 546 True Union Ball Valve-CPVC



Solvent Cement Socket/Threaded NPT

| Size | Part Number/ EPDM Seals | \$ List/ea. | Part Number/ FPM Seals | \$ List/ea. |
|-------|----------------------------|-------------|---------------------------|-------------|
| 3/8 | 163 546 341 | 67.00 | 163 546 351 | 75.00 |
| 1/2 | 163 546 342 | 68.00 | 163 546 352 | 76.00 |
| 3/4 | 163 546 343 | 76.00 | 163 546 353 | 85.00 |
| 1 | 163 546 344 | 95.00 | 163 546 354 | 106.00 |
| 1 1/4 | 163 546 345 | 126.00 | 163 546 355 | 140.00 |
| 1 1/2 | 163 546 346 | 147.00 | 163 546 356 | 164.00 |
| 2 | 163 546 347 | 187.00 | 163 546 357 | 219.00 |



ANSI Flanged

| Size ID Inch | Part Number/ EPDM Seals | \$ List/ea. | Part Number/ FPM Seals | \$ List/ea. |
|-----------------|----------------------------|-------------|---------------------------|-------------|
| 1/2 | 163 546 582 | 122.00 | 163 546 592 | 75.00 |
| 3/4 | 163 546 583 | 130.00 | 163 546 593 | 76.00 |
| 1 | 163 546 584 | 164.00 | 163 546 594 | 85.00 |
| 1 1/4 | 163 546 585 | 205.00 | 163 546 595 | 106.00 |
| 1 1/2 | 163 546 586 | 215.00 | 163 546 596 | 164.00 |
| 2 | 163 546 587 | 282.00 | 163 546 597 | 219.00 |

P/L 15 : Type 375 True Union Ball Valve-CPVC



Socket/Threaded NPT

| Size | Part Number/ EPDM Seals | \$ List/ea. | Part Number/ FPM Seals | \$ List/ea. |
|--------------------|----------------------------|-------------|---------------------------|-------------|
| 1/2 | 163 375 002 | 41.00 | 163 375 017 | 51.00 |
| 3/4 | 163 375 003 | 49.00 | 163 375 018 | 62.00 |
| 1 | 163 375 004 | 57.00 | 163 375 019 | 73.00 |
| 1 1/4 | 163 375 005 | 77.00 | 163 375 020 | 104.00 |
| 1 1/2 | 163 375 006 | 98.00 | 163 375 021 | 134.00 |
| 2 | 163 375 007 | 144.00 | 163 375 022 | 180.00 |
| 2 1/2 ¹ | 163 375 008 | 242.00 | 163 375 023 | 283.00 |
| 3 ¹ | 163 375 009 | 330.00 | 163 375 024 | 374.00 |
| 4 ¹ | 163 375 010 | 562.00 | 163 375 025 | 596.00 |

¹ = 2 1/2" - 6" includes socket only



Flanged

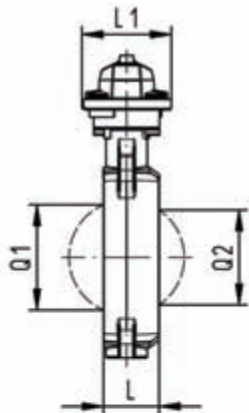
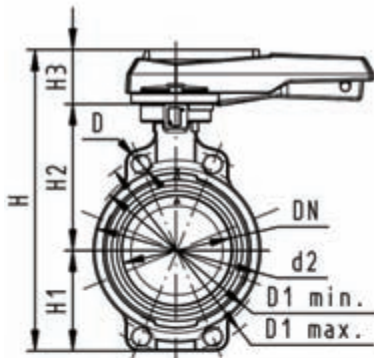
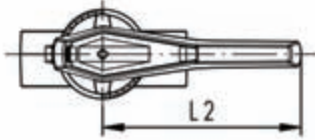
| Size | Part Number/ EPDM Seals | \$ List/ea. | Part Number/ FPM Seals | \$ List/ea. |
|-------|----------------------------|-------------|---------------------------|-------------|
| 1/2 | 163 375 062 | 118.00 | 163 375 077 | 126.00 |
| 3/4 | 163 375 063 | 129.00 | 163 375 078 | 141.00 |
| 1 | 163 375 064 | 140.00 | 163 375 079 | 153.00 |
| 1 1/4 | 163 375 065 | 151.00 | 163 375 080 | 172.00 |
| 1 1/2 | 163 375 066 | 192.00 | 163 375 081 | 220.00 |
| 2 | 163 375 067 | 260.00 | 163 375 082 | 310.00 |
| 2 1/2 | 163 375 068 | 370.00 | 163 375 083 | 410.00 |
| 3 | 163 375 069 | 415.00 | 163 375 084 | 450.00 |
| 4 | 163 375 070 | 610.00 | 163 375 085 | 650.00 |

Manual Butterfly Valves

P/L 74: Type 567 Butterfly Valve-CPVC

Hand Lever with Ratchet Settings

- Connecting dimension: ISO 7005 PN 10, EN 1092 PN 10, DIN 2501 PN 10, ANSI B 16.5 Class 150, BS 1560: 1958, JIS B 2220
- Overall length according to EN 558-1, ISO 5752



| Inch | PSI | Cv | EPDM | List \$/ea. | FPM | List \$/ea. |
|------|-----|------|--------------|---------------|--------------|-----------------|
| 2 | 150 | 103 | ^163 567 002 | 320.00 | ^163 567 062 | 820.00 |
| 2½ | 150 | 154 | ^163 567 003 | 325.00 | ^163 567 063 | 827.00 |
| 3 | 150 | 210 | ^163 567 004 | 358.00 | ^163 567 064 | 893.00 |
| 4 | 150 | 455 | ^163 567 005 | 417.00 | ^163 567 065 | 963.00 |
| 5 | 150 | 805 | ^163 567 006 | 525.00 | ^163 567 066 | 1,200.00 |
| 6 | 150 | 1162 | ^163 567 007 | 561.00 | ^163 567 067 | 1,224.00 |
| 8 | 150 | 2772 | ^163 567 008 | 727.00 | ^163 567 068 | 1,481.00 |

| Inch | D | D1 min | D1 max | d2 | H | H1 | H2 | H3 |
|------|------|--------|--------|-------|-------|------|------|------|
| 2 | 0.75 | 4.72 | 4.92 | 4.09 | 10.39 | 3.03 | 5.28 | 2.13 |
| 2½ | 0.75 | 5.5 | 5.71 | 4.53 | 10.91 | 3.27 | 5.51 | 2.13 |
| 3 | 0.75 | 5.91 | 6.3 | 5.16 | 11.38 | 3.5 | 5.75 | 2.13 |
| 4 | 0.75 | 6.89 | 7.5 | 6.34 | 12.8 | 4.09 | 6.57 | 2.17 |
| 5 | 0.91 | 8.27 | 8.5 | 7.36 | 13.86 | 4.61 | 7.13 | 2.17 |
| 6 | 0.94 | 9.5 | 9.5 | 8.46 | 14.69 | 5.12 | 7.44 | 2.17 |
| 8 | 0.91 | 11.42 | 11.61 | 10.51 | 17.13 | 6.22 | 8.27 | 2.64 |

| Inch | L | L1 | L2 | Q1 | Q2 |
|------|------|------|-------|------|------|
| 2 | 1.77 | 4.17 | 8.07 | 1.57 | - |
| 2½ | 1.81 | 4.17 | 8.07 | 2.13 | 1.38 |
| 3 | 1.93 | 4.17 | 8.07 | 2.64 | 1.97 |
| 4 | 2.2 | 4.17 | 10.04 | 3.46 | 2.91 |
| 5 | 2.52 | 4.17 | 10.04 | 4.45 | 3.82 |
| 6 | 2.83 | 4.17 | 10.04 | 5.47 | 4.84 |
| 8 | 2.87 | 5.51 | 16.06 | 7.01 | 6.65 |

^ = 40% Restock Charge

* = Non-Cancelable / Non-Returnable

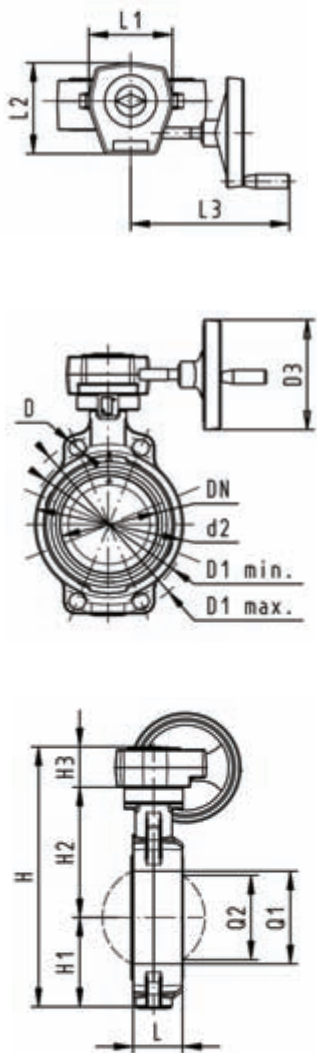
Dimensions are subject to change. Please see online "Price Lists" at <http://www.gfpiping.com> for up-to-date information.

Manual Butterfly Valves

P/L 74: Type 567 Butterfly Valve-CPVC

Reduction Gear with Handwheel

- Connecting dimension: ISO 7005 PN 10, EN 1092 PN 10, DIN 2501 PN 10, ANSI B 16.5 Class 150, BS 1560: 1958, JIS B 2220
- Overall length according to EN 558-1, ISO 5752



| Inch | PSI | Cv | EPDM | List \$/ea. | FPM | List \$/ea. |
|------|-----|------|--------------|---------------|--------------|-----------------|
| 2 | 150 | 103 | ^162 567 042 | 550.00 | ^163 567 062 | 585.00 |
| 2½ | 150 | 154 | ^162 567 043 | 574.00 | ^163 567 063 | 610.00 |
| 3 | 150 | 210 | ^162 567 044 | 610.00 | ^163 567 064 | 658.00 |
| 4 | 150 | 455 | ^162 567 045 | 676.00 | ^163 567 065 | 718.00 |
| 5 | 150 | 805 | ^162 567 046 | 782.00 | ^163 567 066 | 836.00 |
| 6 | 150 | 1162 | ^162 567 047 | 783.00 | ^163 567 067 | 885.00 |
| 8 | 150 | 2772 | ^162 567 048 | 927.00 | ^163 567 068 | 1,053.00 |

| Inch | D | D1 min. | D1 max. | d2 | D3 | H | H1 |
|------|------|---------|---------|-------|-----|-------|------|
| 2 | 0.75 | 4.72 | 4.92 | 4.09 | 6.3 | 10.94 | 3.03 |
| 2½ | 0.75 | 5.5 | 5.71 | 4.53 | 6.3 | 11.46 | 3.27 |
| 3 | 0.75 | 5.91 | 6.3 | 5.16 | 6.3 | 11.93 | 3.5 |
| 4 | 0.75 | 6.89 | 7.5 | 6.34 | 6.3 | 13.35 | 4.09 |
| 5 | 0.91 | 8.27 | 8.5 | 7.36 | 6.3 | 14.37 | 4.61 |
| 6 | 0.94 | 9.5 | 9.5 | 8.46 | 6.3 | 15.23 | 5.12 |
| 8 | 0.91 | 11.42 | 11.61 | 10.51 | 6.3 | 17.17 | 6.22 |

| Inch | H2 | H3 | L | L1 | L2 | L3 | Q1 | Q2 |
|------|------|------|------|------|-----|------|------|------|
| 2 | 5.28 | 2.68 | 1.77 | 4.72 | 5.2 | 9.29 | 1.57 | - |
| 2½ | 5.51 | 2.68 | 1.81 | 4.72 | 5.2 | 9.29 | 2.13 | 1.38 |
| 3 | 5.75 | 2.68 | 1.93 | 4.72 | 5.2 | 9.29 | 2.64 | 1.97 |
| 4 | 6.57 | 2.68 | 2.2 | 4.72 | 5.2 | 9.29 | 3.46 | 2.91 |
| 5 | 7.13 | 2.68 | 2.52 | 4.72 | 5.2 | 9.29 | 4.45 | 3.82 |
| 6 | 7.44 | 2.68 | 2.83 | 4.72 | 5.2 | 9.29 | 5.47 | 4.84 |
| 8 | 8.27 | 2.68 | 2.87 | 4.72 | 5.2 | 9.29 | 7.01 | 6.65 |

^ = 40% Restock Charge

* = Non-Cancelable / Non-Returnable

Dimensions are subject to change. Please see online "Price Lists" at <http://www.gfpiping.com> for up-to-date information.

George Fischer Piping Systems

CPVC Pressure Piping System Specification Submittal Data Sheet Schedule 80 Pipe and Fittings

Pipe:

Pipe will be manufactured to the dimensions and tolerances of ASTM F441. The CPVC material shall be Type I, Grade IV with a cell classification of 23447-B and conform to ASTM D1784. The pipe will conform to NSF 14 & 61, CSA B137.6 (up to 4"), and UPC® standards

- CPVC Sch.80 Type I, Group I Plain End Pipe - 20 ft. Lengths

Fittings

Socket type molded fittings will be manufactured to the dimensions and tolerances of ASTM F439. Threaded type (NPT) molded fittings will be manufactured to the dimensions and tolerances of ASTM F437 and meet the requirements of ANSI/ASME B 1.20.1. Flanges shall meet the O.D. and bolt hole patterns as specified in ANSI/ASME B 16.5. The CPVC material shall be Type I, Grade IV with a cell classification of 23447-B and conform to ASTM D1784. The fittings will conform to NSF 14 & 61, and UPC® standards.

- CPVC Sch.80 Type I, Grade I Socket Type
- CPVC Sch.80 Type I, Grade I Threaded Type
- CPVC Sch.80 Type I, Grade I Flange Type

Job Name: _____

Job Location: _____

Engineer: _____

Contractor: _____

Representative: _____



GEORG FISCHER
PIPING SYSTEMS