

## Next Generation Double-Sided Wafer Cleaning

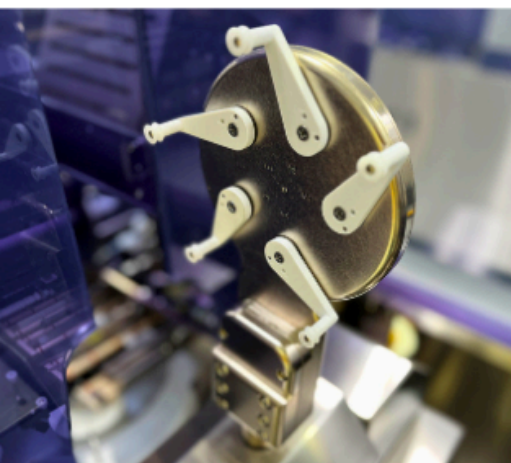
**DSS 200**



## **DSS 200** Wafer Cleaning System

The Entrepix DSS-200 sets the standard for 200mm wafer cleaning. Now the industry's best cleaning process is state-of-the-art with a new control system and reengineered wafer handling to eliminate wafer breakage, even for the thinnest, most fragile substrates.

- Modern Windows™-based control system
- Advanced **Precision Touch Technology** wafer handling for ultra-thin & fragile substrates
- Process development and custom chemistry expertise from Entrepix foundry team



### **Applications Include:**

- Post-CMP clean
- Pre-bond clean
- Pre-photo clean
- Advanced packaging
- Post-metal deposition
- Post-ILD deposition
- Post-scribe
- Substrate manufacturing

**DSS 200**



### **Standard Features:**

- 100 - 200mm wafer size
- Brush scrub cleaning method
- Roller PVA brush type
- Downforce control
- Spin + heat lamp drying method
- $\text{NH}_4\text{OH}$  compatibility
- Backside chemical
- Metal CMP cleans
- STI CMP cleans
- Pre-diluted SC-1
- Citric-based SC-2

### **Optional Features :**

- Megasonic nozzle
- High-pressure DI water spray
- Heated DI water feed
- Edge scrub
- Synergy package for chemical containment
  - Double contained process area
  - Expanded chemical compatibility including: dilute HF, HCL, SC-2 and others
- Integra configuration for direct integration into dry-in/dry-out CMP tools
- Alternate wafer sizes and geometries including square and rectangular



# YOUR EXPERTS IN CMP & WAFER CLEANING

## The Next Generation of Double-Sided Wafer Scrubbing



The new Entrepix enTrak control system substantially improves tool reliability, avoids downtime due to obsolescence and streamlines set-up and user access.

- Modern Windows™-based system
- Robust wafer recovery feature
- Enhanced traceability with event logging
- Advanced security with Role-Based Access Control (RBAC)
- Configurable alarm messaging
- Robot teach screen implementation for fast set-up time
- Easy upgrade process

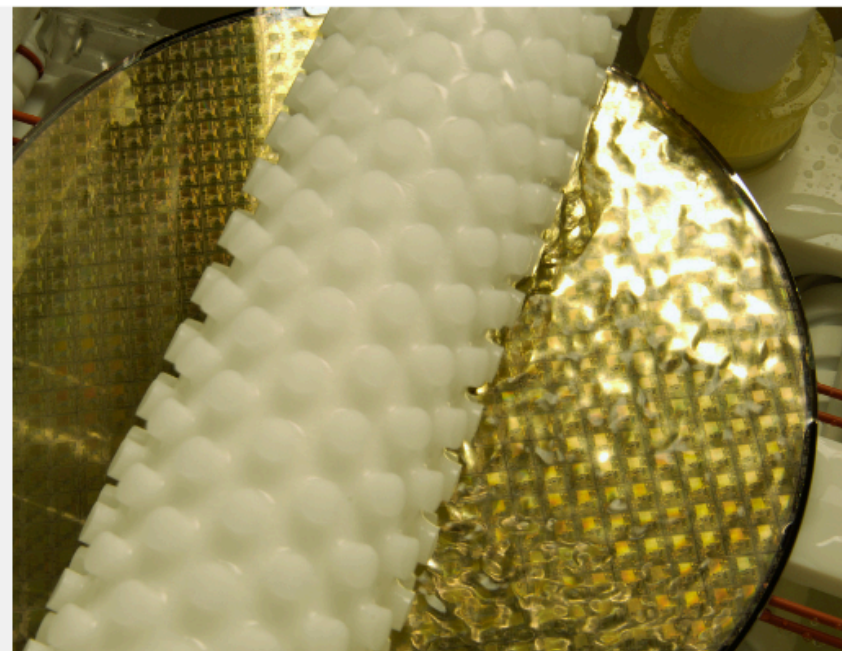


### Comprehensive Parts Support & Upgrades:

The latest Entrepix DSS-200 features now available for Lam OnTrak Series 2 Classic, CE, Synergy, and Integra platforms:

- Control system and software upgrade\*
- Hastelloy spin carriage
- High efficiency heat lamp
- Megasonic cleaning
- DI water conservation
- Through-the-brush delivery
- Inline mix dilution

\*Available only for CE and Synergy models



# AMTECH

SEMICONDUCTOR  
FABRICATION  
SOLUTIONS



Speciality Chemicals for Grinding,  
Lapping, Cutting & Cleaning



Carriers and Templates for All  
Models of Batch Polish Tools



Customer Focused CMP Services  
and Equipment Supplier



Entrepix  
4717 E. Hilton Ave, Ste. 200, Phoenix, AZ 85034  
Tel: +1 602-426-8677  
[etpxparts@amtechsystems.com](mailto:etpxparts@amtechsystems.com)  
[www.entrepix.com](http://www.entrepix.com)



Learn more about DSS-200 wafer cleaners:

