

Made in America

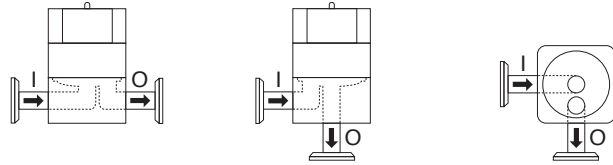


**DELCO**

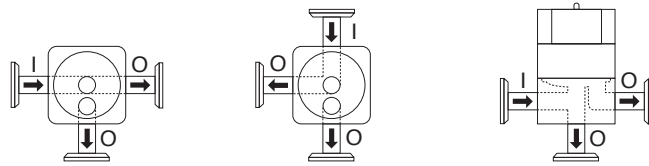
Making Your Products Possible

### Common Flow-Path Options

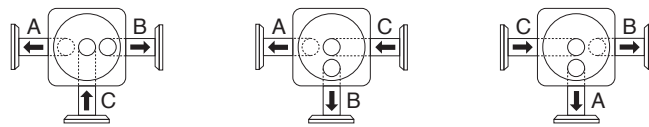
#### 2-way



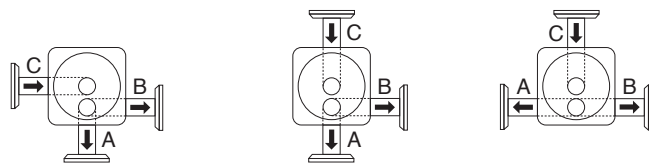
#### 2-way tee



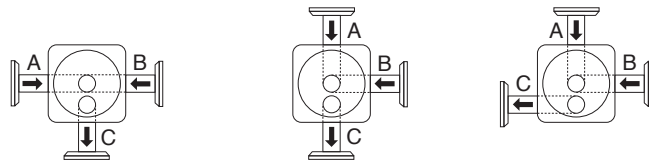
#### 3-way diverting



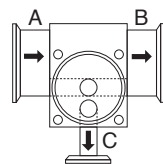
#### 3-way diverting drainable



#### 3-way in-line mixing

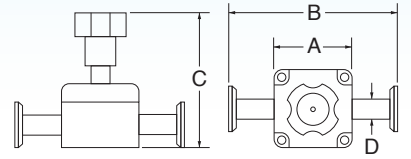


#### Take-off / sample (2WTO)



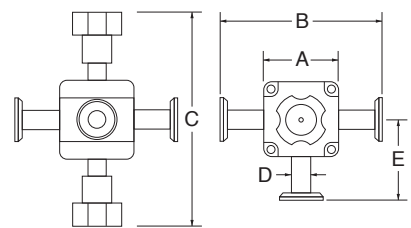
### Dimensions

#### Manual 2-way valves



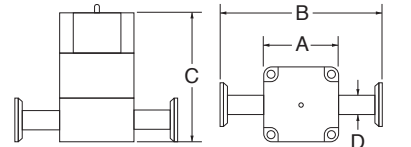
Dimensions	1/2"	3/4"	1"	1 1/2"	2"
A	2.0	3.0	4.0	5.2	6.0
B	3.8	5.0	8.0	9.2	10.0
C	4.4	5.5	7.3	8.3	8.8
D	0.5	0.8	1.0	1.5	2.0
Valve wt. (lbs)	0.9	4.8	9.5	15.0	26.0

#### Manual 3-way valves



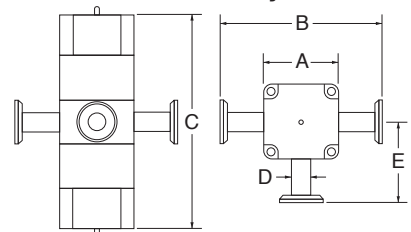
Dimensions	1/2"	3/4"	1"	1 1/2"	2"
A	2.0	3.0	4.0	5.2	6.0
B	3.8	5.0	8.0	9.2	10.0
C	6.3	8.4	12.3	13.3	13.8
D	0.5	0.8	1.0	1.5	2.0
E	2.9	3.9	5.0	6.2	7.0
Valve wt. (lbs)	1.8	7.6	15.8	27.5	45.8

#### Air-actuated 2-way valves



Dimensions	1/2"	3/4"	1"	1 1/2"	2"
A	2.0	3.0	4.0	5.2	6.0
B	3.8	5.0	8.0	9.2	10.0
C	4.4	5.5	7.3	8.3	8.8
D	0.5	0.8	1.0	1.5	2.0
Valve wt. (lbs)	1.5	5.7	10.5	25.0	38.0

#### Air-actuated 3-way valves



Dimensions	1/2"	3/4"	1"	1 1/2"	2"
A	2.0	3.0	4.0	5.2	6.0
B	3.8	5.0	8.0	9.2	10.0
C	6.3	8.4	12.3	13.3	13.8
D	0.5	0.8	1.0	1.5	2.0
E	2.9	3.9	5.0	6.2	7.0
Valve wt. (lbs)	2.5	8.5	17.5	35.5	48.0

3300 Massillon Road, Akron, Ohio 44312  
 p: 330 896-4220 · f: 330 896-1608  
[www.delcolc.com](http://www.delcolc.com)