

Model 602 SBCM

The SBCM has the unique ability to split in two for mounting on either side of pipe or tubing in order to perform precision severing and/or beveling. The SBCM's self-centering collet clamping system provides secure, full contact support, thereby preventing distortion or damage to thin-wall tube or pipe from its clamping forces.

- Models for 1/8" Pipe, up to 4" OD Tube.
- Completely splits to mount around in-line pipe.
- Lubricated with Cleanroom Approved KRYTOX® Grease.
- SBCM Series low profile split-frame collet type lathes are excellent for precision tube and pipe severing and beveling in tight spaces.



Features

- Models for 1/8" Pipe, up to 4" OD Tube.
- Completely splits to mount around in-line pipe.
- Lubricated with Cleanroom Approved KRYTOX® Grease.
- SBCM Series low profile split-frame collet type lathes are excellent for precision tube and pipe severing and beveling in tight spaces.



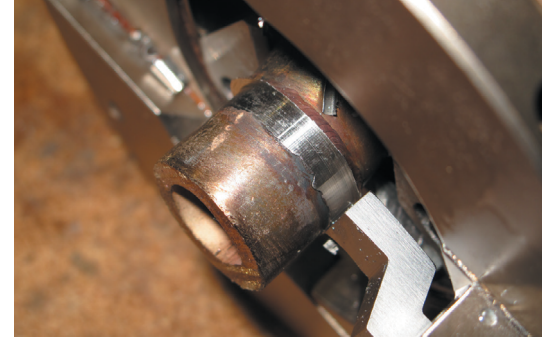
Used as a severing tool, the SBCM utilizes the same Flex-Drive shaft as the Model 300 MicroFacer with the same degree of flexibility, making them ideal for use in confined spaces. The Flex Drive attaches by a three position, quick-detachable bayonet lug connector for rapid and secure set-up and ease of use at any angle.

SBCM Collet Model Split-Frame Lathes

The OD mounting SBCM lathes are protected by durable nickel plating that makes them easy to clean and decontaminate. Their design requires only a short perch length for operation, and are sized to cover a wide range of cutting applications.

Bits can be selected to perfectly match your specific materials to guarantee optimal cutting results for your particular application.

With the ability to efficiently combine different end finishing operations, the SBCM ensures that you get reliable, repeatable results, each and every time.

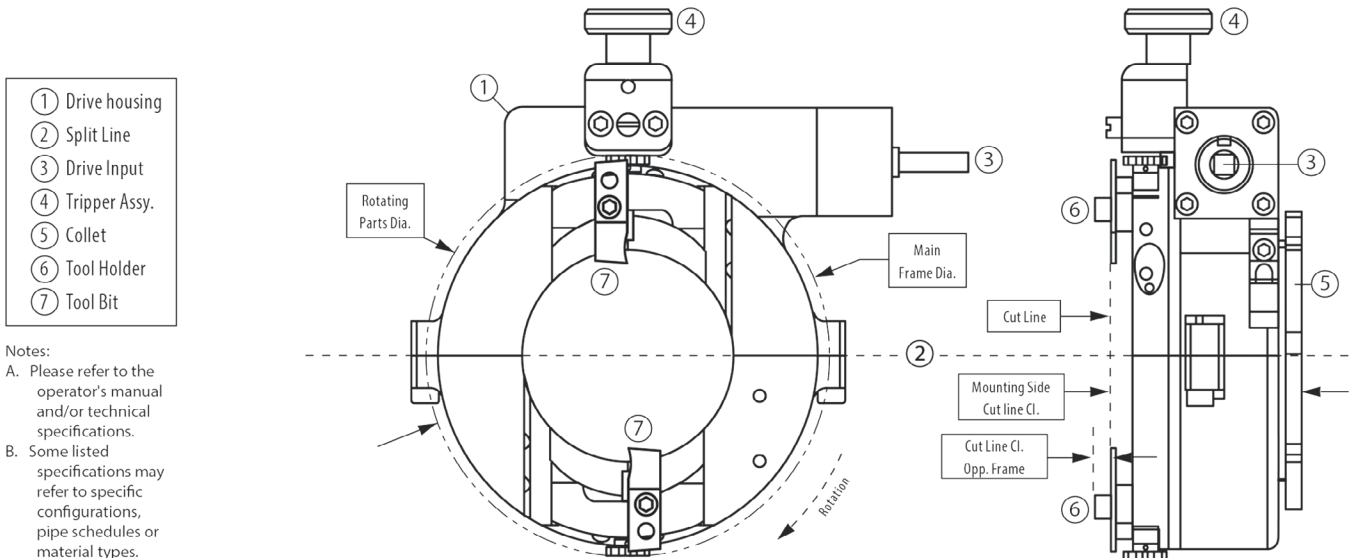


An SBCM clamshell is shown severing stainless tubing. The offset "dogleg" of the tool bit permits shorter cutting of the tube, closer to the machine face and the clamping collet.

Model	Single Pneumatic Drive	Electric (DC) Drive	Flex-Drive Shaft	Roller Cutter Wheel Assy.	Socket Weld Removal Tool Holder Assy.	Auto Disengage Tripper Kit
601 SBCM	●	●	○	○	○	○
602 SBCM	●	●	○	○	○	○
603 SBCM	●	●	○	○	○	○
603.5 SBCM	●	●	○	○	○	○

● Standard ○ Spl/Optional

(Model 602 SBCM Shown)



- Notes:
- A. Please refer to the operator's manual and/or technical specifications.
 - B. Some listed specifications may refer to specific configurations, pipe schedules or material types.

Model	Pipe Size Range	Mounting Range	Rotating Parts Diameter	Main Frame Diameter	Max Wall Thickness (w/ special procedures)	Cut Line Clearance (Mounting Side)	Cut Line Clearance (Opposite Frame)	Machine Weight
	Inch (mm)	Inch (mm)	Inch (mm)	Inch (mm)	Inch (mm)	Inch (mm)	Inch (mm)	Lbs. (kg)
601 SBCM	1/8 (10.3) - 1 (33.4)	.405 (10.3) - 1.31 (33.4)	3.45 (87.6)	3.25 (82.6)	.358 (9.09)	2.24 (56.9)	.25 (6.35)	4.0 (1.81)
602 SBCM	1 (33.4) - 2 (60.3)	1.31 (33.4) - 2.37 (60.3)	4.61 (117.1)	4.40 (111.8)	.358 (9.09)	2.24 (56.9)	.25 (6.35)	6.0 (2.67)
603 SBCM	1 1/4 (42.16) - 3" Tube	1.66 (42.16) - 3.0 (76.2)	5.25 (133.4)	5.03 (127.8)	.358 (9.09)	2.19 (55.0)	.25 (6.35)	6.2 (2.81)
603.5 SBCM	2 1/2 (73.02) - 4" Tube	2.875 (73) - 4.0 (101.6)	6.23 (158.3)	6.03 (153.2)	.358 (9.09)	2.67 (67.9)	.25 (6.35)	8.7 (3.95)

This information is provided as a guideline only to assist with the selection of equipment only. This information is subject to change without notice. Call to speak with a Tri Tool technical sales representative for specific details or technical specifications.

- Portable Precision Machine Tools
- MissionBuilt Custom Engineered Solutions

- On-site Field Services
- Equipment Rentals