

HIGH FLOW RATE INK FILTERS

58 DISC POLYPROPYLENE, STAINLESS STEEL, GLASS FIBER, AND PTFE MEMBRANE FILTERS FOR HIGH-SPEED PRINTING

Cobetter® 58 Disc Point-of-Use Filters with their high flow rate features are specially designed for digital ink-jet printers which require high-speed printing, printheads including digital ceramic printers, wide format printers, and UV flatbed printers.

These filters are available in PPEP non-fiber releasing polypropylene, and stainless steel mesh.

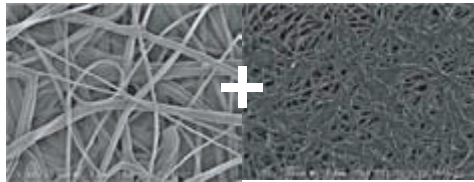


FEATURE	BENEFIT
Available in two filter media options	Pre-polypropylene Depth Media: <ul style="list-style-type: none"> • Provides high flow rate, and high contaminant holding capacity • Non-fiber releasing media for ultra-pure downstream cleanliness
	316L Stainless Steel Mesh: <ul style="list-style-type: none"> • Broad chemical compatibility • Resistant to high temperature • Initial low differential pressure with high flow rate
Large filtration area	Up to 17cm ² filtration area and high flow rate up to 70 ml/min (viscosity @ 10cps and pressure @ 50 mbar), the filters meet ink volume requirements used in high-speed printing.
Internal flow design	Designed to remove bubbles that could negatively affect printing
Thermal welding technology	No adhesive resins to ensure capsule filter's cleanliness and long-use pressure endurance
Quality Assurance	Manufactured in a facility which adheres to ISO 9001 Practices.

Typical Applications

Final Point-of-Use Filtration:

- Dye-based Ink Jet Inks
- Active Dye Ink Jet Inks
- Acid Dye Ink Jet Inks
- Digital Ink Jet Printers
- Digital Ceramic Printers
- Textile Printers
- Wide Format Printers
- UV Flatbed Printers



Pre-Polypropylene depth media

Final non-fiber-releasing polypropylene media

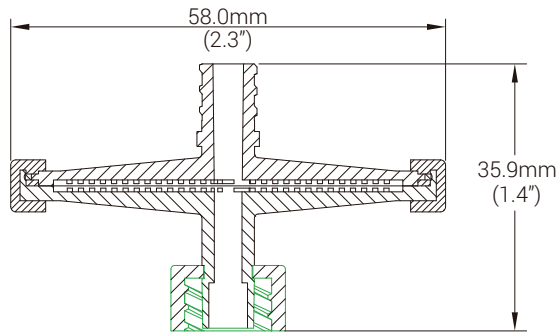


316L Stainless Steel media

SPECIFICATIONS

Filter media	<ul style="list-style-type: none"> • PPEP - Pleated Pre-Polypropylene depth media + final non-fiber-releasing hydrophobic • 316L Stainless Steel media
Cage/Core/Shell/End Cap	Polypropylene or black UV resistant shells
Max. Operating temperature	50°C (120°F)
Max. Operating Pressure	0.7 Mpa (7.0 bar, 101 psi)

DIMENSIONS



Inlet	Female Luer Lock
Outlet	Male Luer Lock (Larger Bore)
Filtration Area	17.3 cm ² (2.68"²)

ORDERING INFORMATION

EXAMPLE: **58DISKB-PPEP0500NC** = 58 disc type, black polypropylene shell, PPEP membrane, 5 µm

58DISC



Shell

— = Standard Polypropylene
B = Black Polypropylene

—



Filter Media

PPEP = Polypropylene Media
SS = Stainless Steel Mesh



Removal Rating

PPEP:
0500 = 5 µm
1000 = 10 µm
2000 = 20 µm
SS:
0500 = 5 µm
1000 = 10 µm
2000 = 20 µm



Fitting Adaptors

C = Female Luer Lock with 4mm hose barb adaptor
D = Female Luer Lock with 3 mm hose barb adaptor
E = Luer Lock End caps
_ = No adaptors
Q = Female Luer Lock with 8 mm hose barb adaptor



BANNER INDUSTRIES IS THE EXCLUSIVE DISTRIBUTOR FOR COBETTER PRODUCTS IN THE USA
Visit www.bannerindustries.com and select the Contact Us link to find the location nearest you. The Banner Industries of N.E., Inc. Terms and Conditions of Sale apply and are fully and expressly incorporated herein by reference and constitute a part of any contract for the purchase of the products described herein.

www.bannerindustries.com | Technical Sales: filtration@bannerindustries.com

CBBPP1087 Rev. 05092020
Copyright © 2020 Banner Industries, Inc. All rights reserved.