



HIGH FLOW LAST CHANCE FILTERS

Stainless steel membrane inline filters for
injet and textile printers

HIGH FLOW LAST CHANCE FILTERS

STAINLESS STEEL MEMBRANE INLINE FILTERS FOR A VARIETY OF MARKING & CODING PRINTERS, WIDE FORMAT PRINTERS, AND TEXTILE PRINTERS

Cobetter® High Flow Last Chance Filters provide small volume, easy connection, and simple design. They have been used in marking & coding printers, wide format printers, and textile printers. These filters can be used as printhead filters or inline connection filters to avoid system tube ink aggregate and to protect the printhead.

| FEATURE | BENEFIT |
|--|---|
| 316L stainless steel media | Provides good pressure endurance, broad chemical compatibility, low initial differential pressure drop, high flow rate. |
| Compact design | Compact design minimizes internal ink volume and waste. Ideal for situations where space is at a premium. |
| Easy and quick connection options | Multiple configurations for inline use, with optional multi-outlet configurations and optional vent ports |
| Thermal welding technology | No adhesive resins to ensure capsule filter's cleanliness and long-use pressure endurance. |
| Quality Assurance | Manufactured in a facility which adheres to ISO 9001 Practices. |

SPECIFICATIONS

| | PHF/PHF II | HPHF/HPHF II | HFPF |
|-----------------------------------|---|---|---|
| Filter media | Sintered Stainless Steel Mesh or Stainless Steel Fiber Felt | Sintered Stainless Steel Mesh or Stainless Steel Fiber Felt | Sintered Stainless Steel Mesh or Stainless Steel Fiber Felt |
| Shell/End Cup/Core | Polypropylene | Polypropylene | Polypropylene |
| Max. allowable temperature | 50°C | 50°C | 50°C |
| Max. allowable pressure | 0.7 Mpa (7.0 bar, 101 psi) | 0.2 Mpa (2.0 bar, 29 psi) | 0.2 Mpa (2.0 bar, 29 psi) |
| Connections | 4 mm hose barb | 4 mm hose barb | Female Luer Lock |
| Filtration area | 1.88 cm ² | 15 cm ² | 20 cm ² |

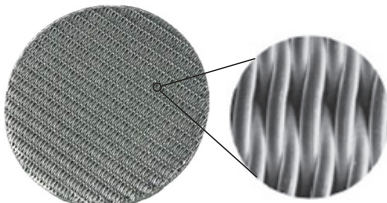


Typical Applications

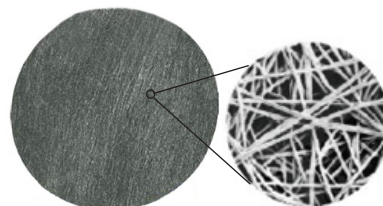
Final Point-of-Use Filtration of:

- Dye-based inks
- Pigment-based ink
- Print head protection
- Wide format printer filters

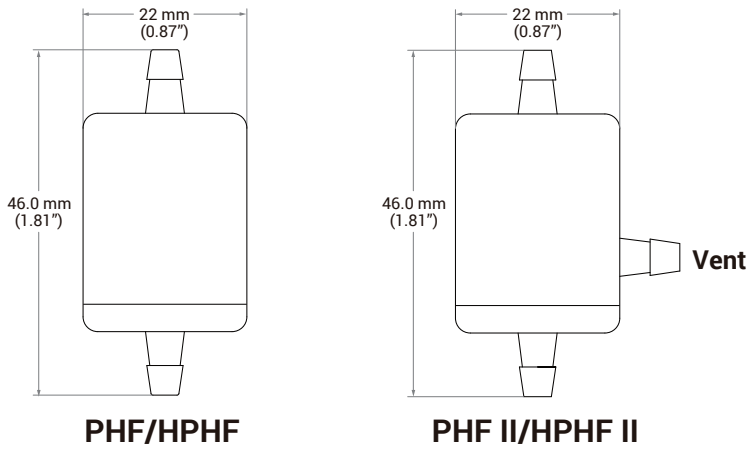
Sintered SS Mesh



SS Fiber Felt



DIMENSIONS

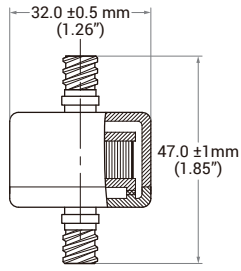


ORDERING INFORMATION - PHF/PHF II, HPHF/ PPHF II

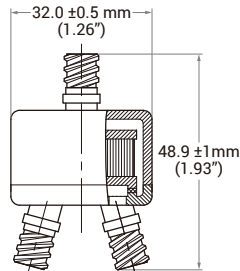
EXAMPLE: **PHF-SS0500C** = 1.88 cm², 316L SS media, 5 µm

| | | | | | |
|--|----------------------------------|--|--|--|----------------------------------|
| <div style="border: 1px solid black; width: 40px; height: 20px; margin: 0 auto;"></div> <div style="text-align: center;"> <p>Series</p> <p>PHF = 1.88 cm²</p> <p>PHF II = 1.88 cm² with side hose barb vent</p> <p>HPHF = 15 cm²</p> <p>HPHF II = 15 cm² with side hose barb vent</p> </div> | <p style="font-size: 2em;">-</p> | <div style="border: 1px solid black; width: 40px; height: 20px; margin: 0 auto;"></div> <div style="text-align: center;"> <p>Shell</p> <p>_ = Standard, White Polypropylene</p> <p>B = Black UV Polypropylene</p> </div> | <div style="border: 1px solid black; width: 40px; height: 20px; margin: 0 auto;"></div> <div style="text-align: center;"> <p>Filter Material</p> <p>SS = Sintered Stainless Steel Mesh</p> <p>SF = Stainless Steel Fiber Felt</p> </div> | <div style="border: 1px solid black; width: 40px; height: 20px; margin: 0 auto;"></div> <div style="text-align: center;"> <p>Removal Rating</p> <p><i>Sintered Stainless Steel Mesh:</i></p> <p>0500 = 5.0 µm</p> <p>1000 = 10 µm</p> <p>2000 = 20 µm</p> <p><i>Stainless Steel Fiber Felt:</i></p> <p>1000 = 10 µm</p> <p>1500 = 15 µm</p> </div> | <p style="font-size: 2em;">C</p> |
|--|----------------------------------|--|--|--|----------------------------------|

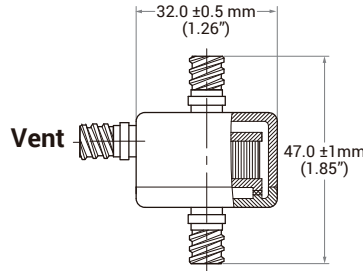
DIMENSIONS - HFPF SERIES



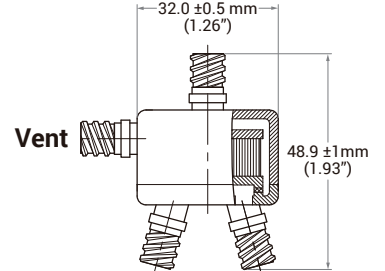
HFPF1



HFPF2



HFPF1G



HFPF12G

ORDERING INFORMATION - HFPF SERIES

EXAMPLE: **HFPF2G-SS1000NC** = two outlets, vent, sintered stainless steel mesh, 10 µm

HFPF



Shell

_ = Standard, White Polypropylene
B = Black UV Polypropylene



Outlet

1 = One outlet
2 = Two outlets



Inlet

_ = No vent
G = Vent

-



Filter Material

SS = Sintered Stainless Steel Mesh
SF = Stainless Steel Fiber Felt



Removal Rating

SS:
0500 = 5.0 µm
1000 = 10 µm
2000 = 20 µm
SF:
1000 = 10 µm
1500 = 15 µm



Adaptor Fitting

N = No adaptors
C = Female Luer Lock with 4mm hose barb adaptor
D = Female Luer Lock with 3mm hose barb adaptor
E = Luer Lock Caps

C



BANNER INDUSTRIES IS THE EXCLUSIVE DISTRIBUTOR FOR COBETTER PRODUCTS IN THE USA
Visit www.bannerindustries.com and select the Contact Us link to find the location nearest you. The Banner Industries of N.E., Inc. Terms and Conditions of Sale apply and are fully and expressly incorporated herein by reference and constitute a part of any contract for the purchase of the products described herein.

www.bannerindustries.com | Technical Sales: filtration@bannerindustries.com

CBBPP1108 Rev. 05092020
Copyright © 2020 Banner Industries, Inc. All rights reserved.