

GLASSFLOW® FILTER CARTRIDGES

SUPER-FINE GLASS MICROFIBER FILTERS FOR PRE AND FINAL FILTRATION OF PIGMENT-BASED AND DYE-BASED DISPERSED INKS

GlassFlow® Filter Cartridges are composed of super-fine glass fiber media with a pre-layer constructed of polypropylene for pigment-based ink and dye-based dispersed inks for use during pre-filtration and final filtration. Glass fiber media has an inherently absorptive characteristic that enhances filter retention capability.

FEATURE	BENEFIT
Super-fine glass micro-fiber membrane with built-in polypropylene pre-filtration layer	High porosity for high flow rates and low pressure drops
	>98% particle retention efficiency at rated pore size
	Stiff structure of glass micro-fiber media provides high flow rate
	Glass fiber media has high contaminant holding capacity and inherently adsorptive effect which features its gel removal ability
Quality Assurance	Manufactured in a facility which adheres to ISO 9001 Practices. 100% Integrity tested and lot traceable.
Particle shedding	Autoclaved filter effluent meets the requirements in USP <788> for large volume parenterals.
Non-fiber release	Component materials meet the criteria for a "Non-fiber-releasing filter" as defined in 21 CFR210.3 (b) (6).

SPECIFICATIONS

Filter media	Glass Microfiber
Support layer	Polypropylene
Supports/core/cage/end caps	Polypropylene
O-rings	Silicone, EPDM, FKM, FEP/PFA encapsulated FKM
Effective filtration area	0.24 - 0.34 m ² (2.6 - 3.7 ft ²)/ 10 inch
Max. operating temperature	80°C
Max. differential pressure	0.40 MPa (4.0 bar, 58 psi) at 21°C 0.21 MPa (2.1 bar, 30.5 psi) at 80°C

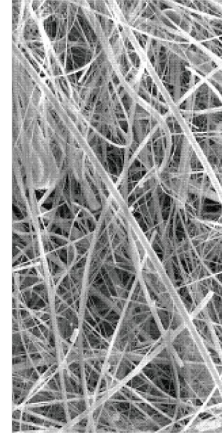


Typical Applications

- Pre and Final Filtration of Pigment-Based Inks and Dye-based Dispersed Inks

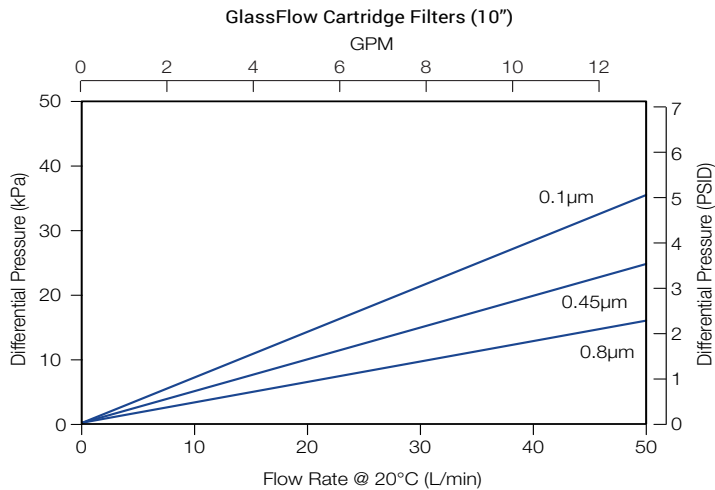
RETENTION

Particle Range	Filter Code				
	0020 (0.2µm)	0045 (0.45 µm)	0100 (1 µm)	0500 (5 µm)	0600 (6 µm)
≥0.2 µm	97.94%	92.76%	-	-	-
≥0.5 µm	98.99%	97.89%	88.59%	-	-
≥1.0 µm	100%	100%	97.87%	78.86%	-
≥2.0 µm	100%	100%	99.99%	89.45%	74.32%
≥5.0 µm	100%	100%	100%	97.99%	95.65%
≥10.0 µm	100%	100%	100%	100%	100%



Glass Fiber Media

FLOW RATES



ORDERING INFORMATION

EXAMPLE: **LGFP0045SF10S-C** = 0.45 µm, 226/Fin, 10" filter with silicone seals

LGFP



Removal Rating

0010 = 0.1 µm
 0020 = 0.2 µm
 0030 = 0.3 µm
 0045 = 0.45 µm
 0080 = 0.8 µm
 0100 = 1.0 µm
 0300 = 3 µm
 0500 = 5 µm
 0600 = 6 µm
 1000 = 10 µm



Connection

DOE = Double Open End, flat gasket
 TC = 222 O-ring/Flat
 TF = 222 O-ring/Fin
 SF = 226 O-ring/Fin
 SC = 226 O-ring/Flat



Nominal Length

05 = 5"
 10 = 10"
 20 = 20"
 30 = 30"
 40 = 40"



-C

Seal Material

S = Silicone
 E = EPDM
 V = FKM
 P = E-FKM (FEP/PFA encapsulated FKM)



BANNER INDUSTRIES IS THE EXCLUSIVE DISTRIBUTOR FOR COBETTER PRODUCTS IN THE USA
 Visit www.bannerindustries.com and select the Contact Us link to find the location nearest you. The Banner Industries of N.E., Inc. Terms and Conditions of Sale apply and are fully and expressly incorporated herein by reference and constitute a part of any contract for the purchase of the products described herein.

www.bannerindustries.com | Technical Sales: filtration@bannerindustries.com

CBBPP1072 Rev. 01022020

Copyright © 2019 Banner Industries, Inc. All rights reserved.
 GlassFlow® is a registered trademark of Cobetter Filtration Equipment Co., Ltd.